



Whited Fen Community Meeting

March 6, 2023



Nine Mile Creek Watershed District

Brett Eidem – Staff

Lizzy Boor - Staff

Grace Butler- Board Manager

Peggy Kvam- Board Manager

City of Minnetonka

Leslie Yetka- Staff

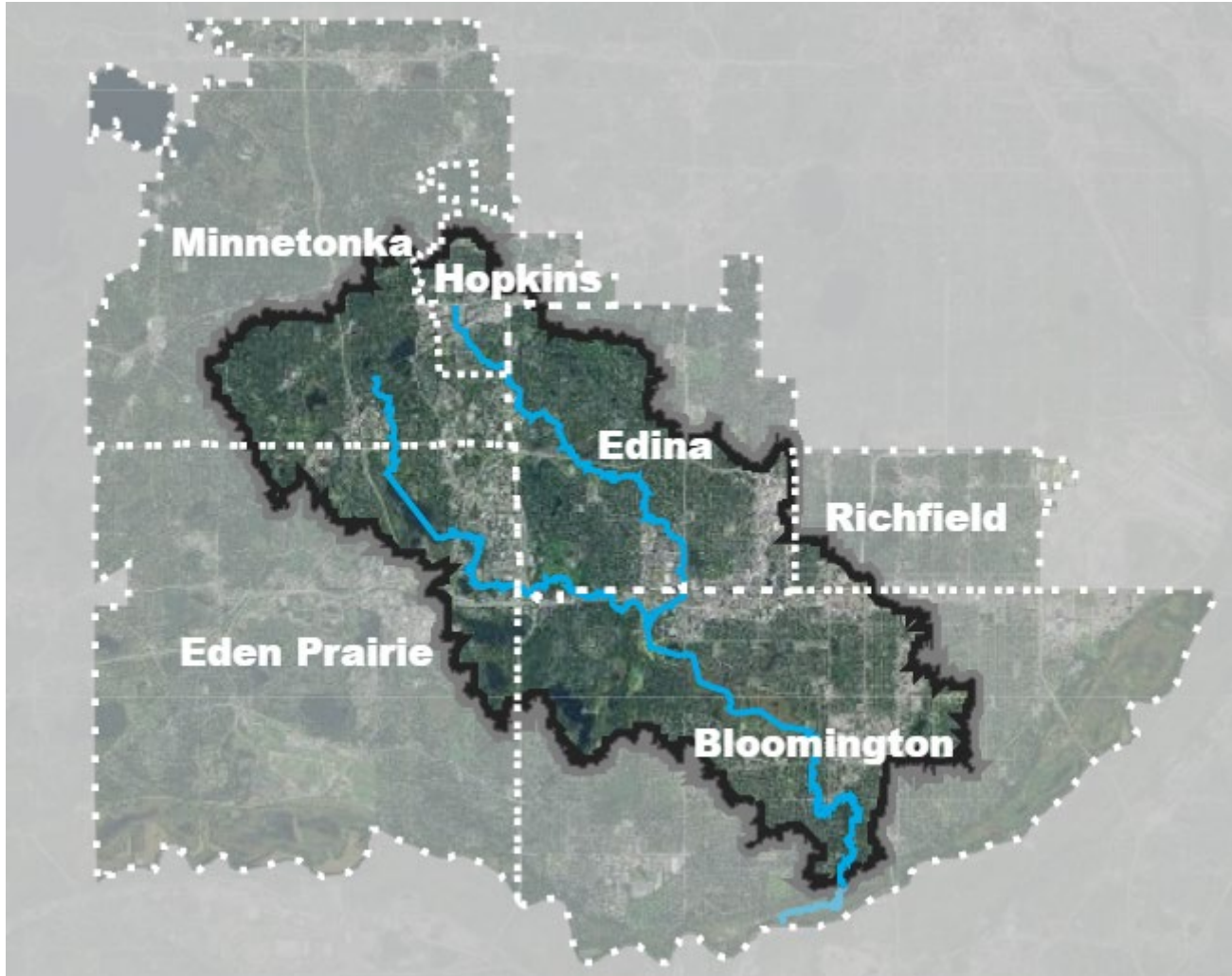


Community Meeting Agenda

- Nine Mile Creek Watershed District
- Whited Fen Overview
- Proposed Restoration
- Landowner/Volunteer Participation
- Next Steps/Timeline
- Discussion



Nine Mile Creek Watershed District





What is a wetland?

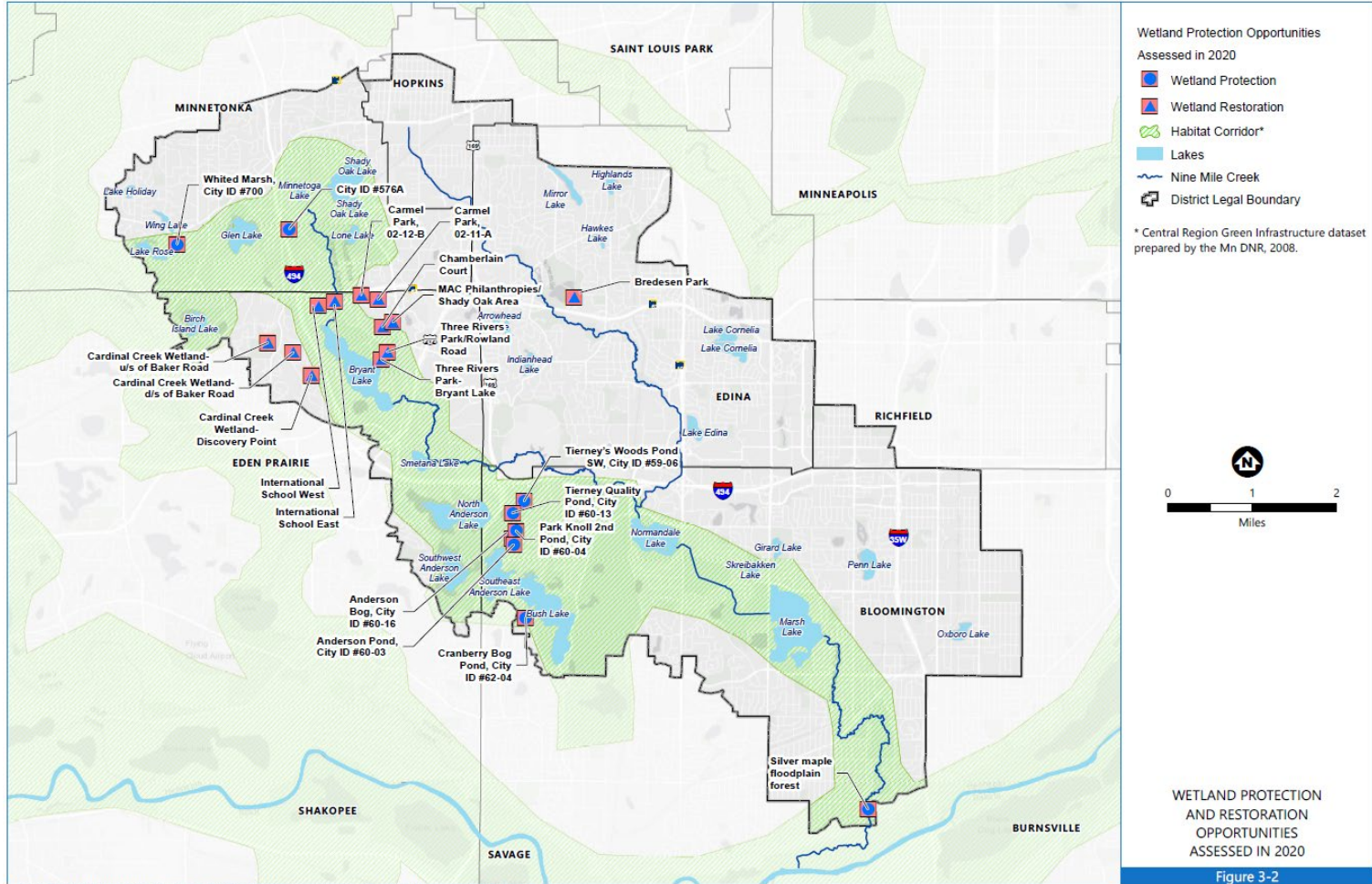


"Wetlands are areas that are inundated or saturated by surface or ground water at a frequency and duration sufficient to support, and that under normal circumstances do support, a prevalence of vegetation typically adapted for life in saturated soil conditions. Wetlands generally include swamps, marshes, bogs, and similar areas."

- Definition of wetlands as used by the U.S. Army Corps of Engineers (Corps) and the U.S. Environmental Protection Agency (EPA) since the 1970s for regulatory purposes.



Watershed Wide Wetland Study





What Makes Whited Special?

Rich Fen Floating Mat (Sphagnum moss)

- reducing the risk of floods
- improving water quality
- providing habitat for unique plant and animal communities
- sequestering large amounts of carbon





Tamarack, cotton grass, and fen wiregrass sedge.



Rich fen with floating Sphagnum moss mat.



Cranberry plants emerging from Sphagnum moss.



Cranberry and sedges.



Why do something now?

Invasive Vegetation Management

- Narrowleaf Cattail
- Purple Loosestrife
- Glossy Buckthorn

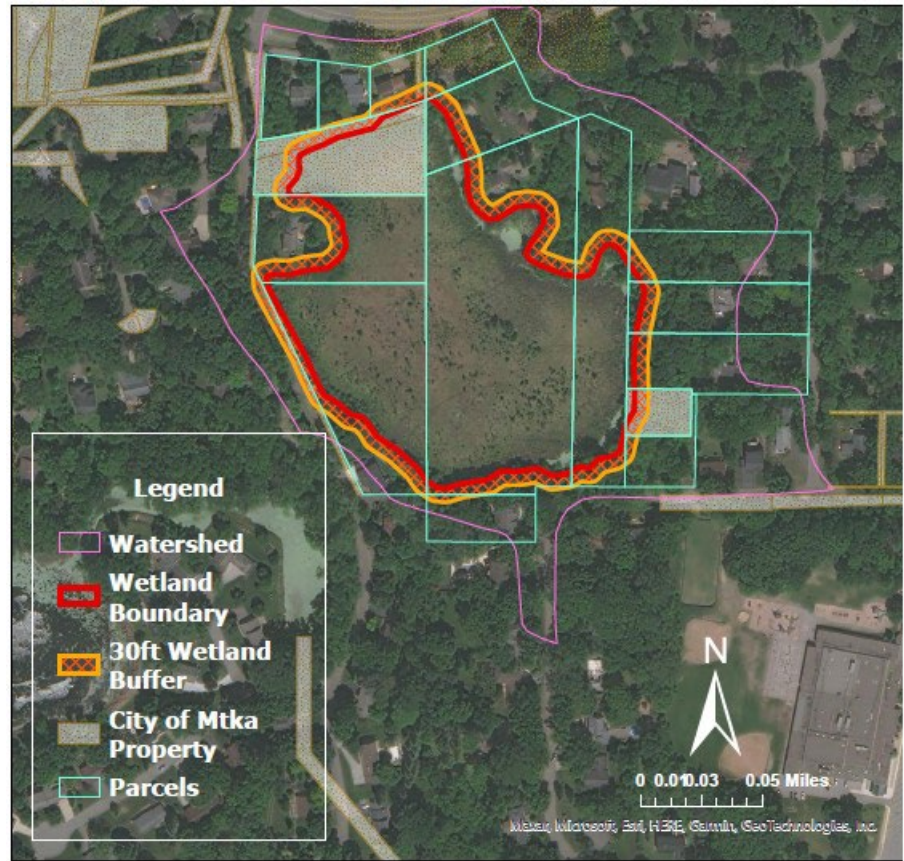




We need your help!

Landowners

- Access agreements
 - Temporary construction
 - Longterm maintenance
- Wetland Buffers
 - Remove upland invasives
 - Establish wetland buffer (15-30')
- Preserve Wetland Health
 - Keep trash and yard waste out
 - Do not plant exotic species





Tentative Project

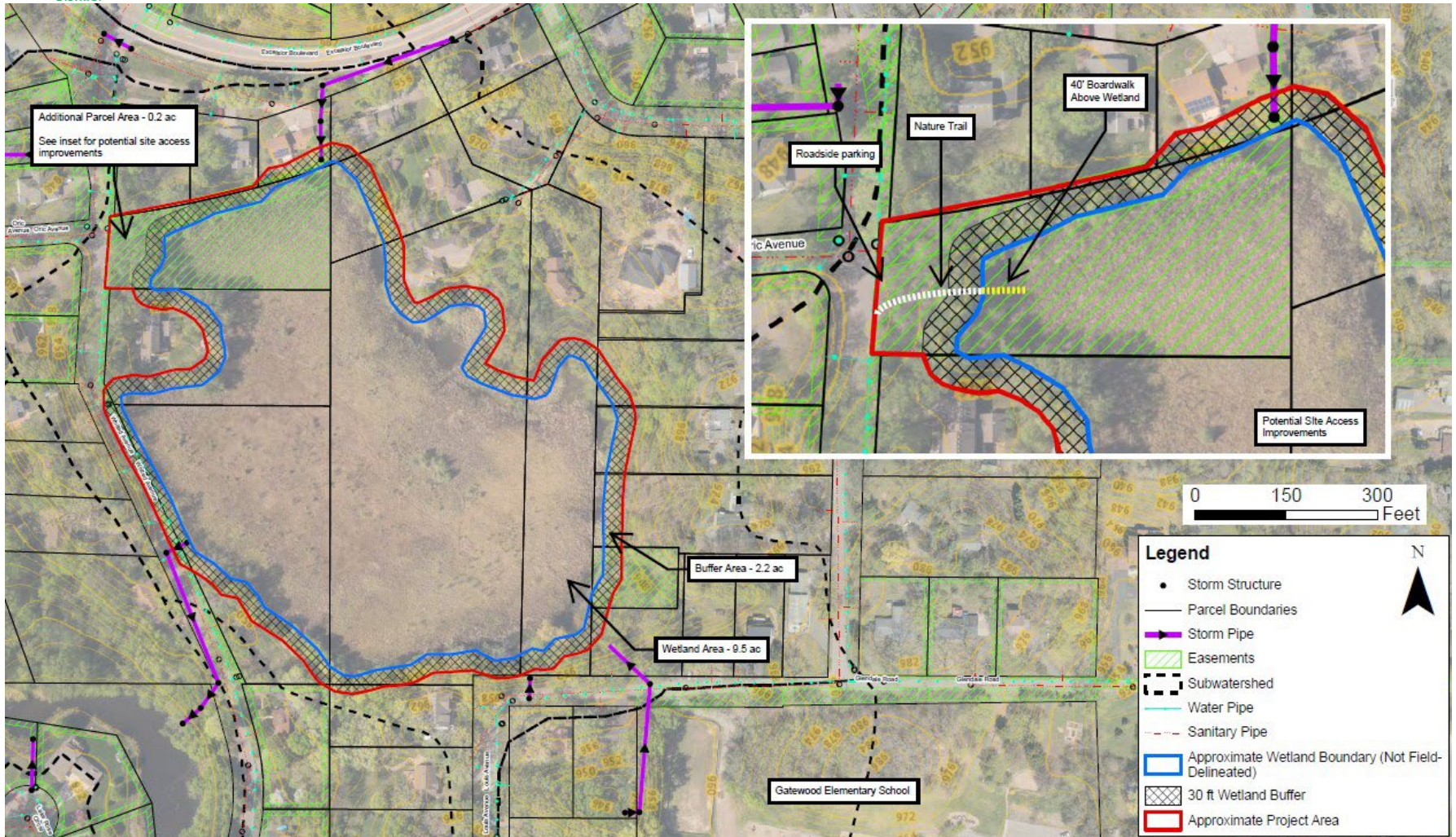
Option 2 - WITHOUT Mechanical Equipment

Site	Task (over 3 yrs)	Units	Qty	Unit Cost	Cost	Notes
Whited Marsh 9.5 ac	cattail/PL control (wick-hand) - 3x	ac	6	\$ 12,000	\$ 72,000	low density of cutting required; most if not all brush left/thin-spread
	cut & stump-treat >1/2" woody - 1x*	ac	3	\$ 3,000	\$ 9,000	
	cattail/PL control (spot spray) - 3x	ac	1	\$ 1,200	\$ 1,200	
	RCG control (spot spray) - 4x	ac	0.25	\$ 8,000	\$ 2,000	
	Wetland Total				\$ 84,200	
Whited Buffer (30ft buffer, including City parcel buffer)	remove invasive trees/shrubs - 1x	ac	2.2	\$ 4,000	\$ 8,800	assume piled & burned on site, or left as habitat brush piles
	2.2 ac treat woody re-sprouts & seedlings -3x	ac	2.2	\$ 900	\$ 1,980	
	spot herbicide - 5x	ac	2.2	\$ 1,500	\$ 3,300	
	enhancement overseeding - 1x	ac	2.2	\$ 1,000	\$ 2,200	
	30ft Buffer Total				\$ 16,280	
Whited Buffer (additional City upland)	remove invasive trees/shrubs - 1x	ac	0.2	\$ 6,000	\$ 1,200	assume piled & burned on site, or left as habitat brush piles
	0.2 ac treat woody re-sprouts & seedlings -3x	ac	0.2	\$ 1,350	\$ 270	
	spot herbicide - 5x	ac	0.2	\$ 2,250	\$ 450	
	enhancement overseeding - 1x	ac	0.2	\$ 1,500	\$ 300	
	City Buffer Total				\$ 2,220	
Base Project Total (WITHOUT mech. equip.)				\$	102,700	
Optional Tasks (installation of live herbaceous & woody plants)	install native plant plugs (30ft buffer) - 1x*	ac	2.2	\$ 2,500	\$ 5,500	500 plugs/ac
	install native plant plugs (City upland) - 1x*	ac	0.2	\$ 5,000	\$ 1,000	1,000 plugs/ac
	install native trees/shrubs (30ft buffer) - 1x*	ac	2.2	\$ 2,000	\$ 4,400	assume ~4-10 trees/ac, or ~50 shrubs/ac, or combination
	install native trees/shrubs (City upland) - 1x*	each	1	\$ 1,600	\$ 1,600	assume 8 trees (10-gal pot) or ~40 shrubs, or combination
	Optional Total				\$ 12,500	

* Item(s) added to OPC since initial costing.



City of Minnetonka Parcel





Longterm Maintenance

- Work with City on inspections/maintenance plan
- Volunteer Help





Next Steps

- Bring NMCWD Board outcomes of Community Meeting
- Advance Final Restoration design, costs, timelines
- Acquire Necessary Permits and landowner access/maintenance easements
- Work with Minnetonka on City parcel restoration and overlook design
- More school/youth group engagement



Questions?

