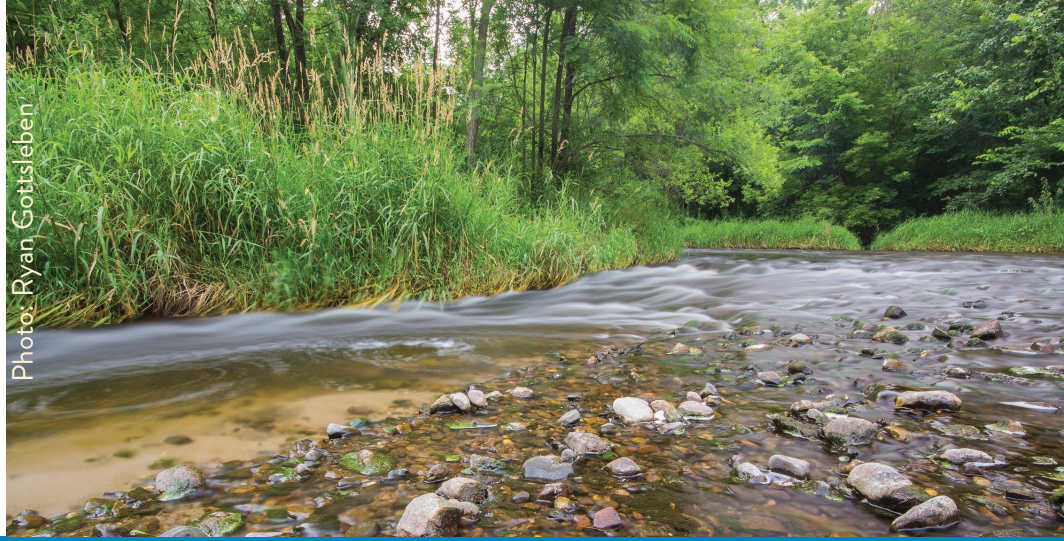




Photo: Ryan Gottsleben



This guide references rule

**3.2.1**

## Wetland Conservation Act

Edina, Hopkins, Richfield, Eden Prairie

### When should you use this page?

- Both of the following apply:
  1. Your project involves draining, excavating, working in, or filling a wetland (referred to as “wetland impacts”)
  2. Your project is in NMCWD and Edina, Hopkins, Richfield, or Eden Prairie

### What should I know?

- The Wetland Conservation Act (WCA) is triggered when a project involves draining, excavating, or filling a wetland
- The watershed district oversees the Wetland Conservation Act (WCA), unless a city opts to oversee it instead
- Bloomington and Minnetonka are the cities within NMCWD that oversee WCA
- Therefore, NMCWD enforces WCA for projects within its borders in Edina, Hopkins, Richfield, and Eden Prairie. Almost all wetlands are regulated to some level under WCA.
- WCA is not the entirety of the NMCWD Wetlands Management rule. Don't confuse WCA with buffers.

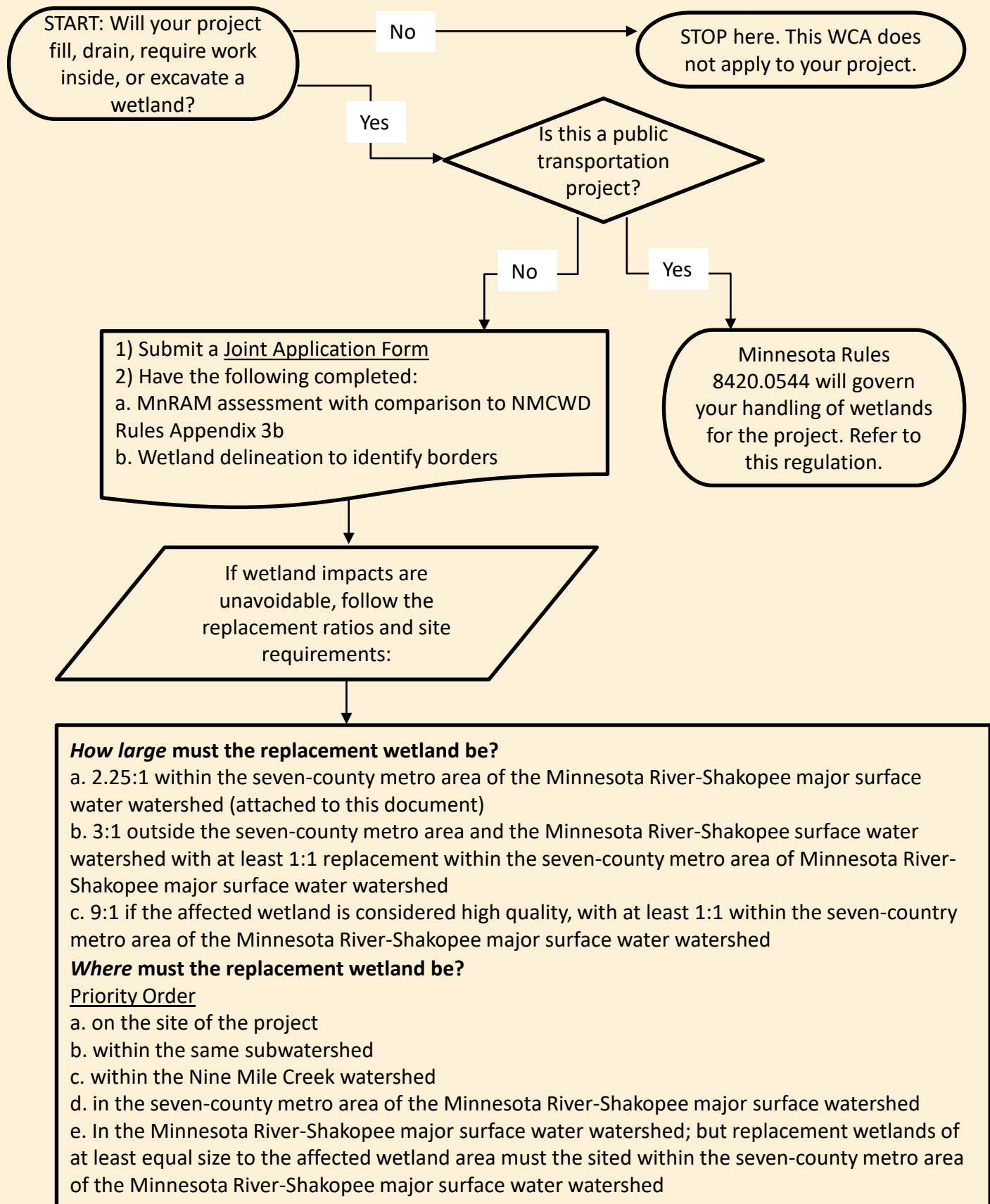
### What should I start?

- Contact the District if your project involves wetland impacts. It is highly recommended you work with a local wetland specialist, as WCA has specialized reporting and field work requirements.
- The flowchart on the next page will help you plan generally for steps and wetland replacements. It is an overview and does not address all required forms or meetings.

**continued**

## Flowchart of WCA when NMCWD is LGU

- This flowchart is meant to assist generally for steps and wetland replacements. It is an overview; and does not address all required forms or meetings.





# Minnesota River-Shakopee Major Surface Water Watershed

- This map is also available in NMCWD Rules Appendix 3a.
- See the previous page to understand when it should be used.

