

LAKE CORNELIA

Water Quality Fact Sheet 2009-01

Quick Facts

Lake Area (acres): 51.5

Littoral area (acres): 51.5

(The littoral area is the portion of water body extending from the shoreline lakeward to the greatest depth occupied by rooted plants)

Maximum Depth (ft): 5 for the northern basin and 7 for the southern

Water Clarity (ft): 1

Lake Classification: Level 4

Trophic Status: Hypereutrophic (Highly productive, rich in nutrients)



What are the different lake classifications?

Level 1 — Whole-body contact recreational (swimming)

Level 2 — Partial-body contact recreational

Level 3 — Fishing and aesthetic

Level 4 — Runoff management

Location

Cornelia Lake is located in central Edina. It is South of highway 62 between Highway 100 and France Ave, see map on back side.

Lake Characteristics

Lake Cornelia is a small shallow lake and is part of a natural marsh area. Lake Cornelia is comprised of North and South lakes, connected by a 12 inch pipe which runs under 66th Street. The outflow from South Lake Cornelia discharges through an extensive storm water sewer system into Lake Edina. Currently, Lake Cornelia provides sufficient water storage of surface runoff during a 100-year frequency regional flood event.

Water Quality

Lake Cornelia currently is a Level 4 classification level, which is generally intended for runoff management and has no significant recreational value. It has high levels of nutrients and low levels of water clarity. The lake is highly productive and algae is definitely present. However, the Minnesota Department of Natural Resources (MDNR) stocks the lake annually with approximately 350 bluegills for the Kids Fishing Program and is therefore used for recreation.

Goals

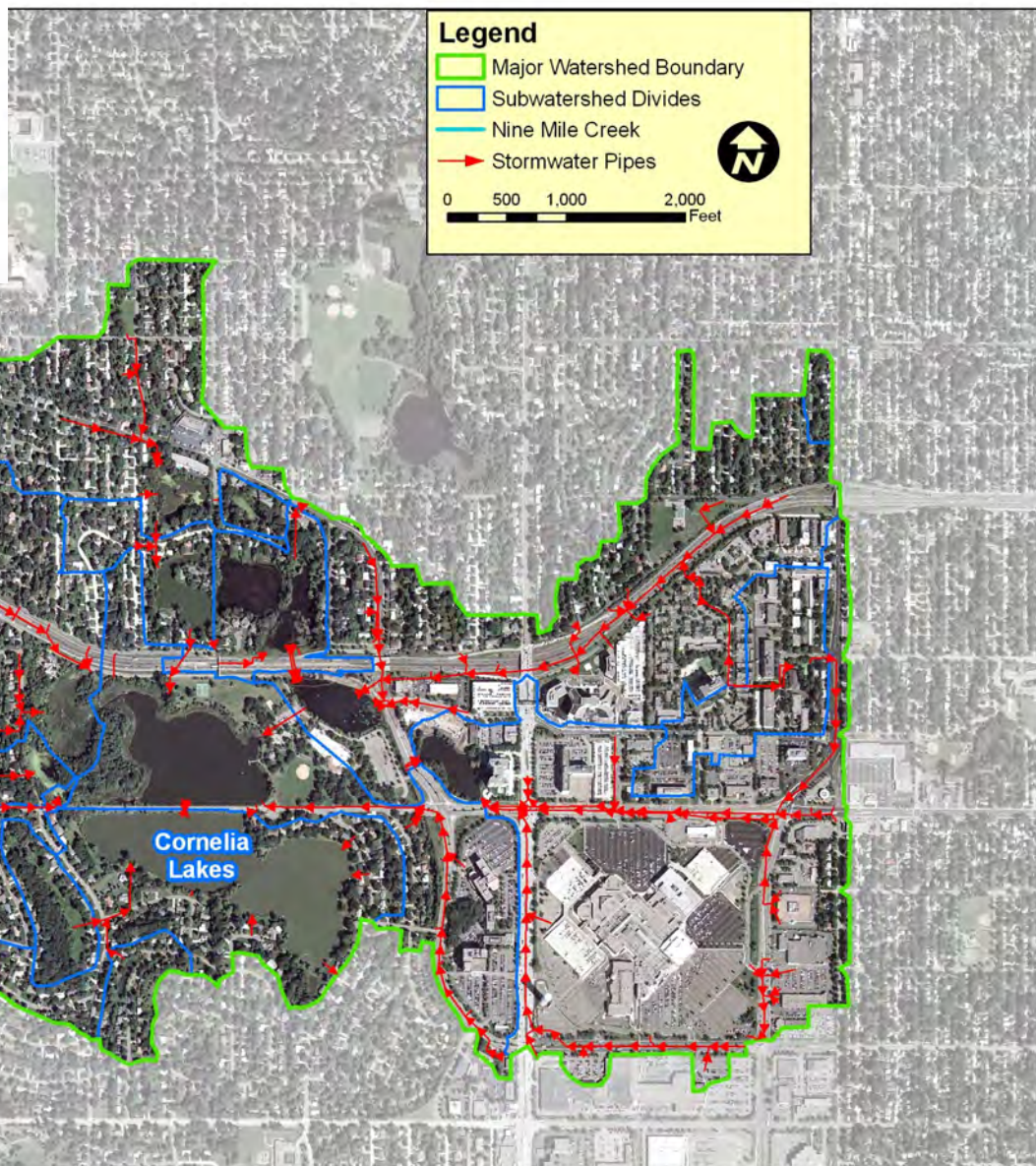
The Nine Mile Creek Watershed would like to manage the lake to a level 3 classification and therefore, support recreational activities such as fishing and allow for aesthetic viewing and wildlife habitat.

Did you know?

Lake Cornelia receives stormwater runoff from an urbanized watershed of approximately 975 acres. The watershed is primarily low density residential and commercial land use, including much of the Southdale retail area.

To learn more about the Nine Mile Creek Watershed District please visit us on the web www.ninemilecreek.org

Where does Lake Cornelia's water come from?



As visibly shown on the map above, a lot of storm drain pipes lead to Lake Cornelia. These pipes carry water to Lake Cornelia that fall on this part of the watershed and is not infiltrated in the ground. The water that is captured runs off lawns, streets, roof tops and parking lots. It then flows right into Lake Cornelia washing and carrying the pollutants left on that land.

What can you do?

The district is working with businesses to implement Best Management Practices also referred as BMPs to reduce nutrient loading into the lake. However, help is needed from local residents. Here are few tips to ensuring green lawns and blue waters:

1. Sweep up leaves, grass clippings and excess fertilizer from driveways and streets.
2. Dispose of trash appropriately.
3. Use native plants in gardens. Native plants have long roots that are more efficient in soaking up water.
4. Build a raingarden.
5. Use rain barrels to collect water.
6. Water with care—actively growing grass requires 1-inch of water per week. This equals to one hour of sprinkling once a week if no rain has fallen.