

# BUSH LAKE

## Water Quality Fact Sheet 2012-07

### Quick Facts

**Lake Area (acres):** 188

**Littoral area (acres):** 110

(The littoral area is the portion of water body extending from the shoreline lakeward to the greatest depth occupied by rooted plants)

**Maximum Depth (ft):** 35

**Water Clarity (ft):** 9.2

**Lake Classification:** Level 1

**Trophic Status:** Mesotrophic (nourished)



#### What are the different lake classifications?

Level 1— Whole-body contact recreational (swimming)

Level 2— Partial-body contact recreational

Level 3— Fishing and aesthetic

Level 4— Runoff management

### Location

Bush Lake's watershed is located in West Bloomington. It is south of Highwood Drive, north of Lindstrom Drive in between West Bush Lake Road and East Bush Lake Road.

### Lake Characteristics

The entire Bush Lake watershed (1,285 acres) is fully urbanized. The watershed consists predominantly of low density residential land use (35%) and single-family residential use (30%). The lake primarily is managed for hybrid muskellunge and largemouth bass and is stocked with hybrid muskellunge every three years.

### Water Quality

Bush Lake is currently a Level 1 classification level, which support full body contact such as swimming. However, there are occasional summer algal blooms that hinder swimming possibilities. The cause of these blooms is urban stormwater runoff conveying large amounts of phosphorus to the lake.

### Goals

The Nine Mile Creek Watershed would like to maintain the lake to a level 1 classification.

#### Did you know?

Prior to 2000, Bush Lake was landlocked meaning the water draining to the lake would remain in the lake, seep or evaporate. However, rising lake levels during 1961 through 1994 raised concerns among residents regarding flooding impacts on riparian properties. An outlet pumping water out of Bush Lake to Southeast Anderson Lake was built in 2000. The outlet is only used when lake levels are higher than its normal elevation.

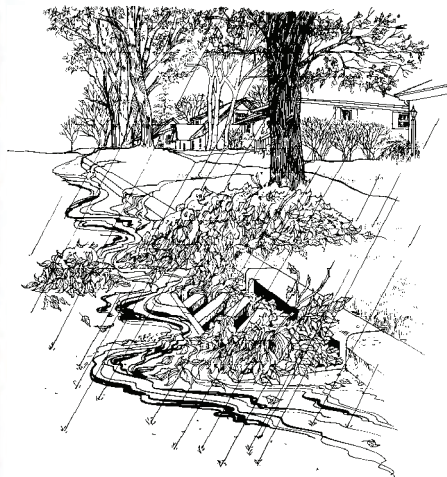
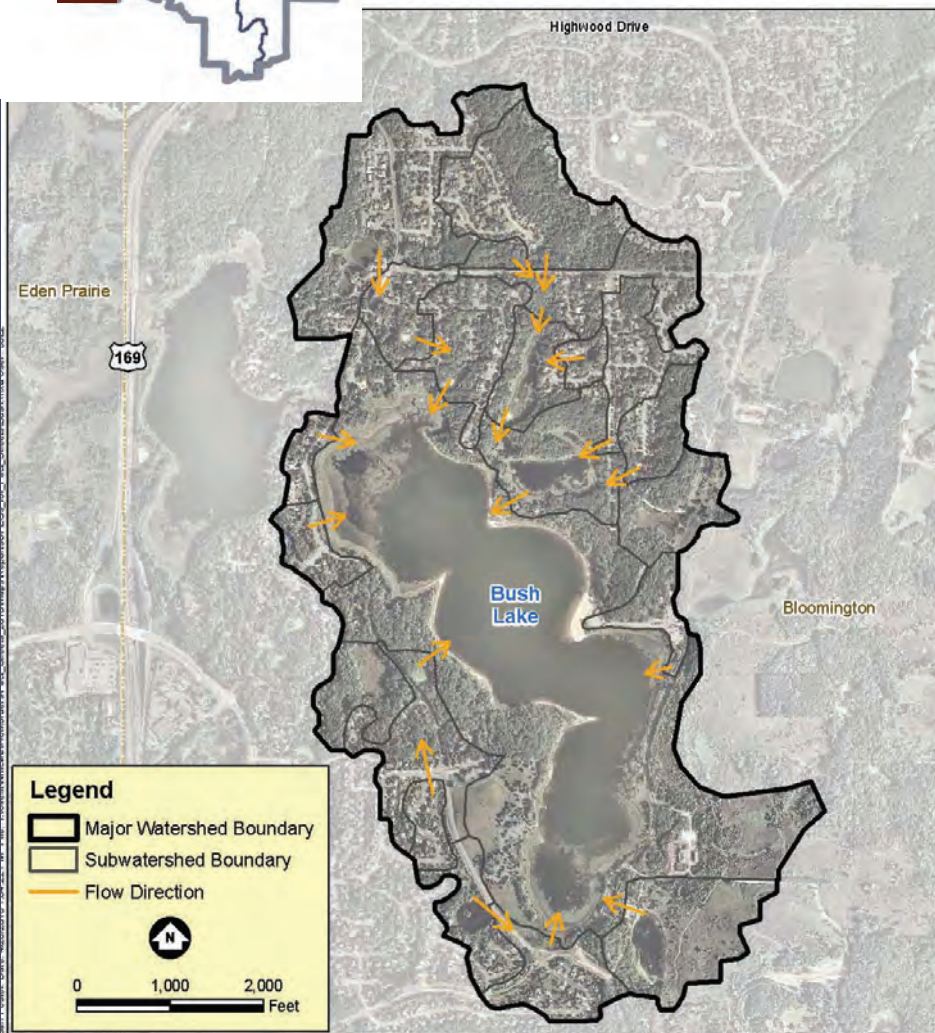
To learn more about the Nine Mile Creek Watershed District please visit us on the web [www.ninemilecreek.org](http://www.ninemilecreek.org)

# Where does Bush Lake's water come from?



As visibly shown on the map, a lot of storm water leads to Bush Lake. These pipes carry water that fall on this part of the watershed and is not infiltrated in the ground. This water washes chemicals or pollutants left on lawns, streets, roof tops and parking lots and carries it right into Bush Lake. This makes every curb part of a shoreline!

## Bush Lake Watershed



Leaves are a big source of phosphorus. If left to enter the storm drain, they will contribute to unhealthy algal growth in Bush Lake..

## What can you do to help?

Help is needed from local residents. Here are few tips to ensuring green lawns with blue waters:

1. Sweep up leaves, grass clippings and excess fertilizer from driveways and streets.
2. Dispose of trash appropriately.
3. Use native plants in gardens. Native plants have long roots that are more efficient in soaking up water.
4. Build a raingarden. To learn more on raingardens, please visit our partner website [www.bluethumb.org](http://www.bluethumb.org)

5. Use rain barrels to collect water.
6. Water with care—actively growing grass requires 1-inch of water per week. This equals to one hour of sprinkling once a week if no rain has fallen.

### Cost-Share/Grant Opportunity

The Nine Mile Creek Watershed District offers financial assistance via a Cost-Share/Grant program for efforts that protect and improve water and natural resources within the Nine Mile Creek Watershed District. The application are available early January and are due the first Friday in April. Past funded projects include raingardens, rain barrels, green roofs, pervious pavement, native habitat restoration. For more information please visit our website at [www.ninemilecreek.org](http://www.ninemilecreek.org).