

Bush Lake Community Meeting

March 18th, 2025



Cynthia Rubio
Nine Mile Creek Watershed District
Administrative Specialist



Lizzy Boor
Nine Mile Creek Watershed District
Watershed Specialist



Jack Distel
City of Bloomington
Water Resources Specialist



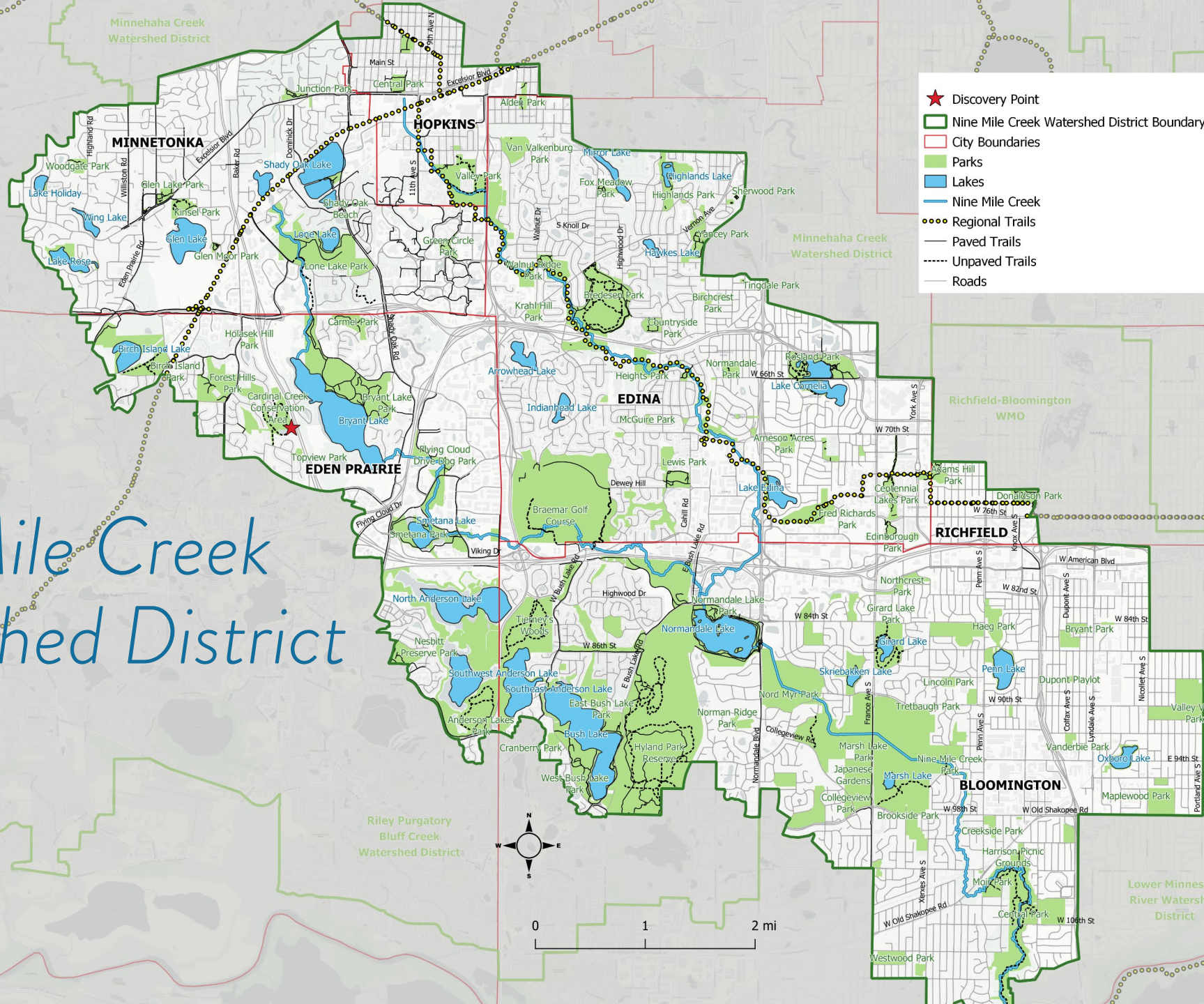
Bush Lake Community Meeting

- Current Lake Health
 - Past district projects
 - City projects
 - Upcoming water quality study
-
- We want to hear from you!



What is a Watershed?





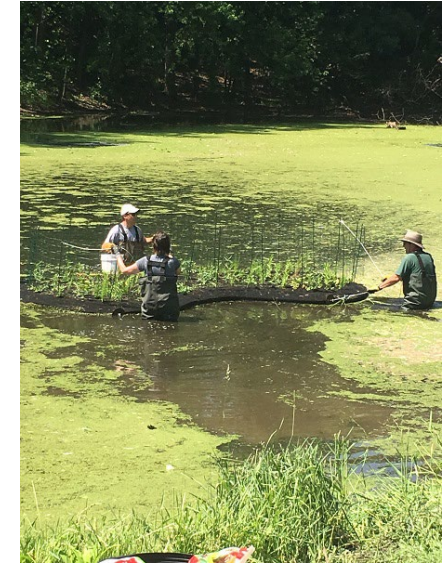
What we do



*Educational Workshops
and Programs*



Monitoring



Cost Share Grants

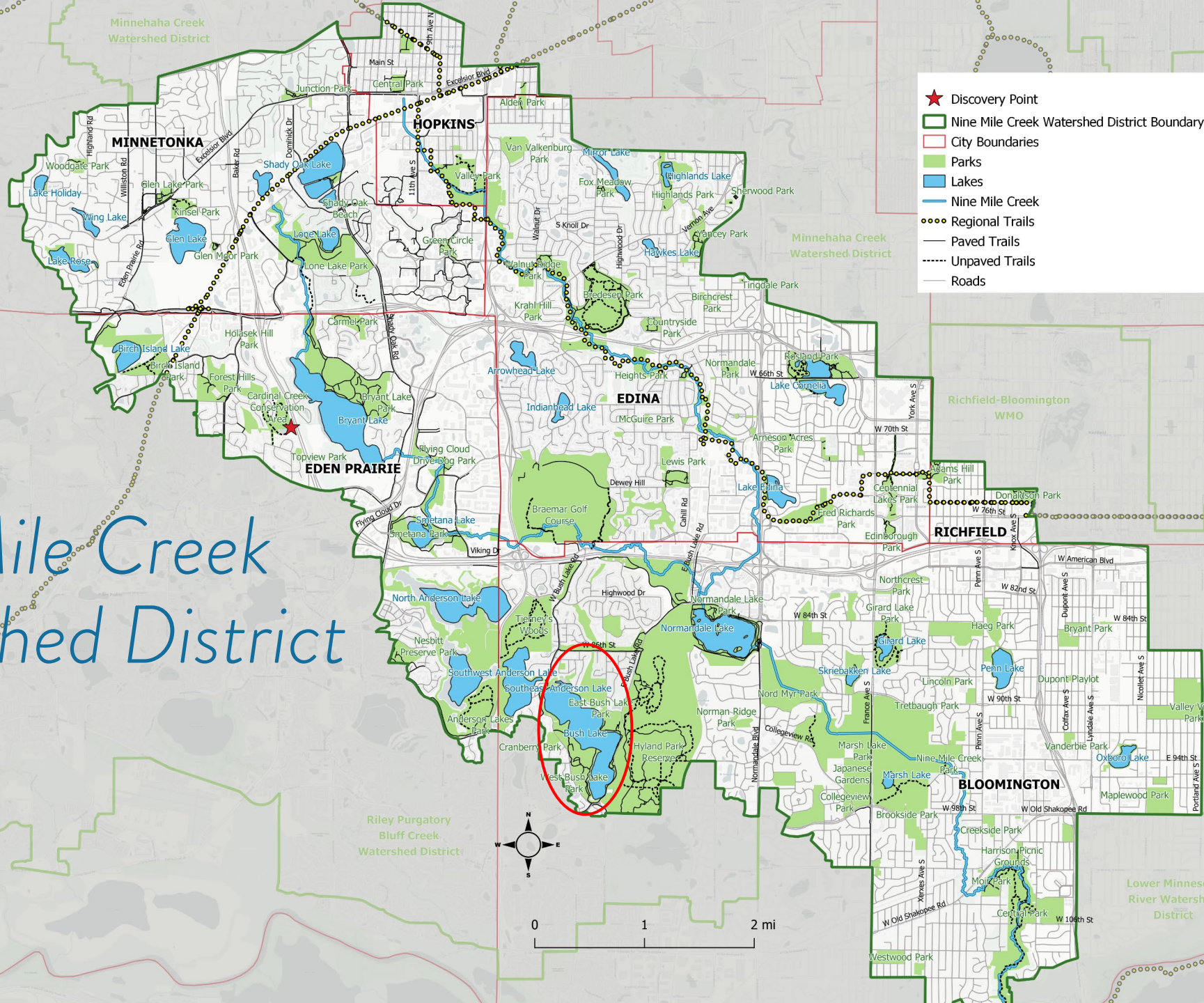


Permitting

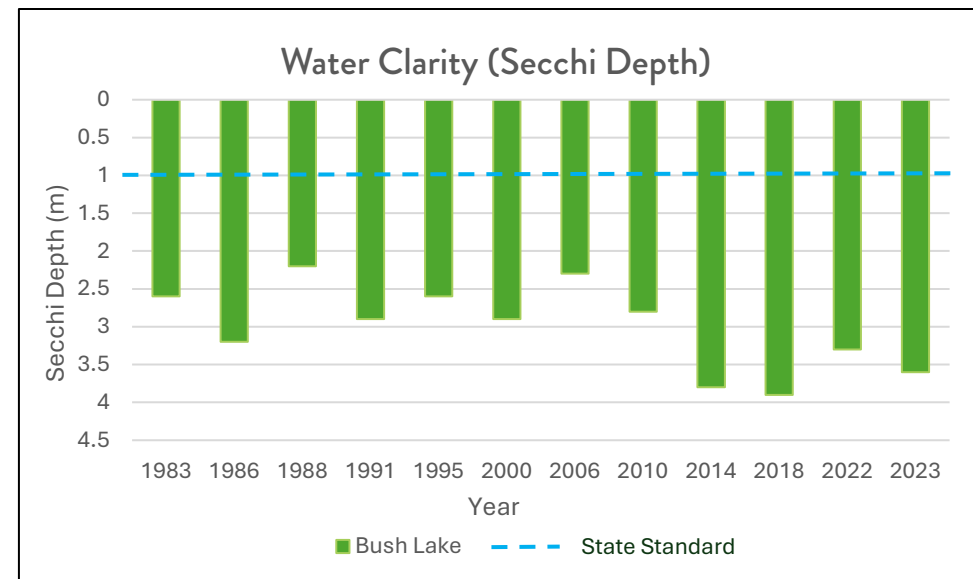
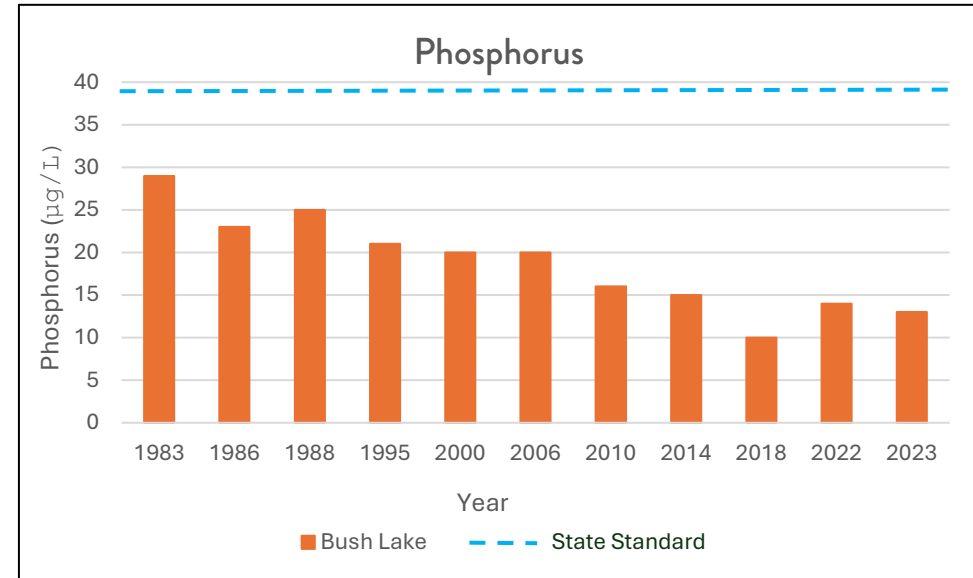
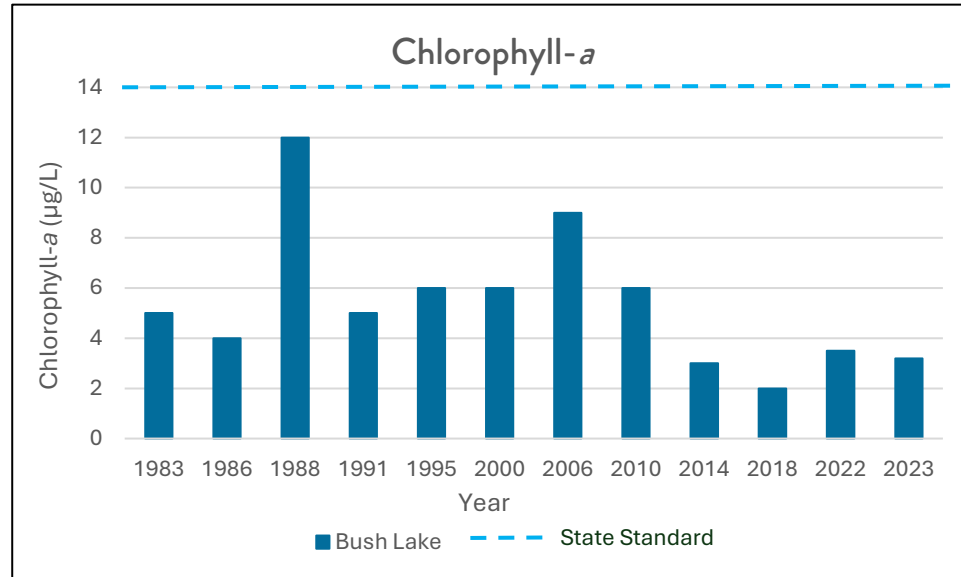


Capital Improvement Projects

Nine Mile Creek Watershed District



Water Quality



Fisheries

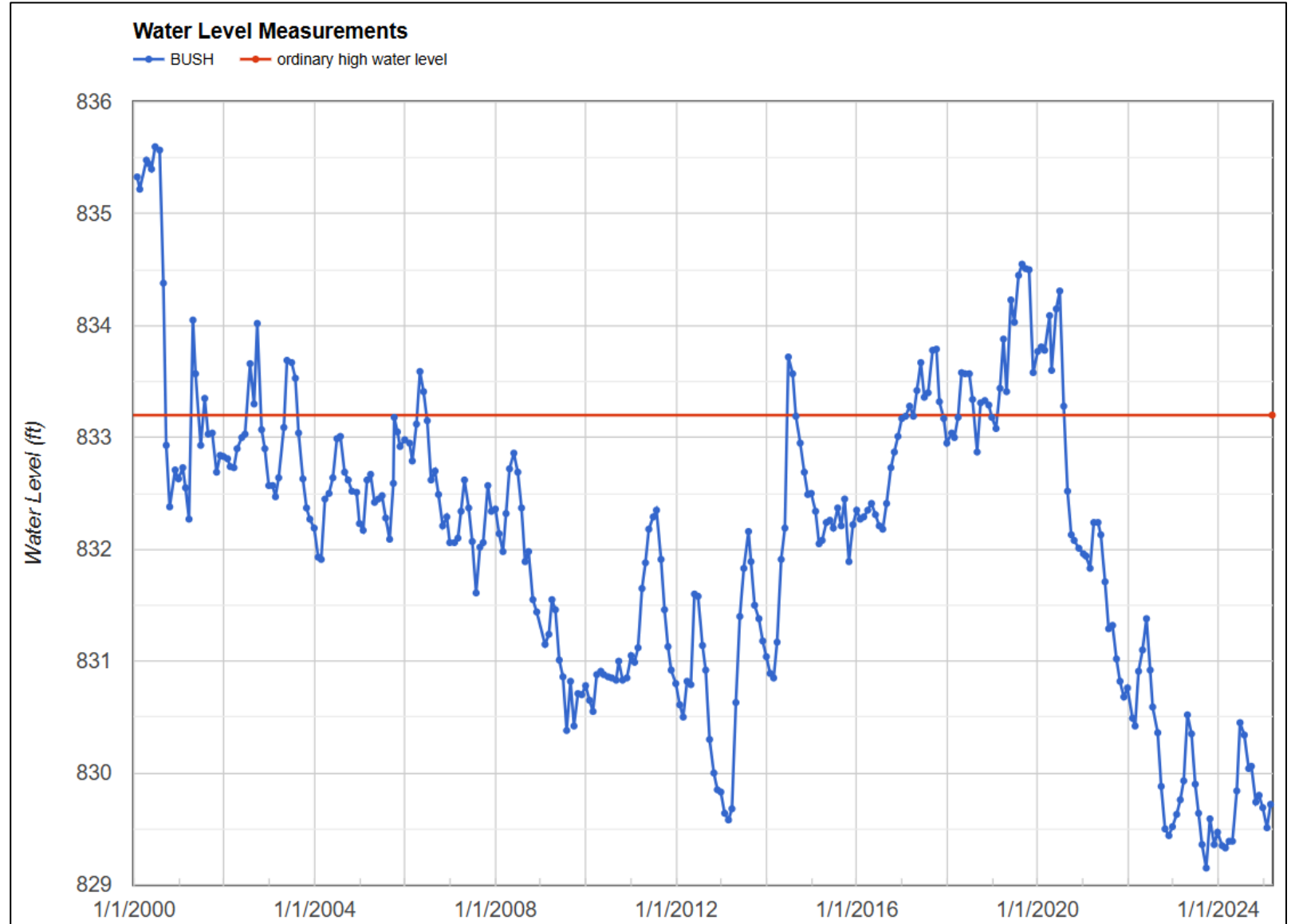
89 lbs/acre

Length of Select Species Sampled - All Gear Combined

Species	Number of fish caught in each category (inches)													Total
	0-5	6-7	8-9	10-11	12-14	15-19	20-24	25-29	30-34	35-39	40-44	45-49	50+	
black crappie	6	13	0	2	2	0	0	0	0	0	0	0	0	23
bluegill	360	11	0	0	0	0	0	0	0	0	0	0	0	371
brown bullhead	0	0	1	1	8	0	0	0	0	0	0	0	0	10
common carp	0	0	0	0	0	0	0	0	1	0	0	0	0	1
green sunfish	7	0	0	0	0	0	0	0	0	0	0	0	0	7
hybrid sunfish	87	25	0	0	0	0	0	0	0	0	0	0	0	112
largemouth bass	3	2	2	12	14	24	0	0	0	0	0	0	0	57
northern pike	0	0	0	0	0	26	60	7	0	0	0	0	0	93
pumpkinseed	62	4	0	0	0	0	0	0	0	0	0	0	0	66
white sucker	0	0	0	0	0	1	1	0	0	0	0	0	0	2
yellow bullhead	0	5	32	47	19	0	0	0	0	0	0	0	0	103
yellow perch	1	0	0	0	0	0	0	0	0	0	0	0	0	1

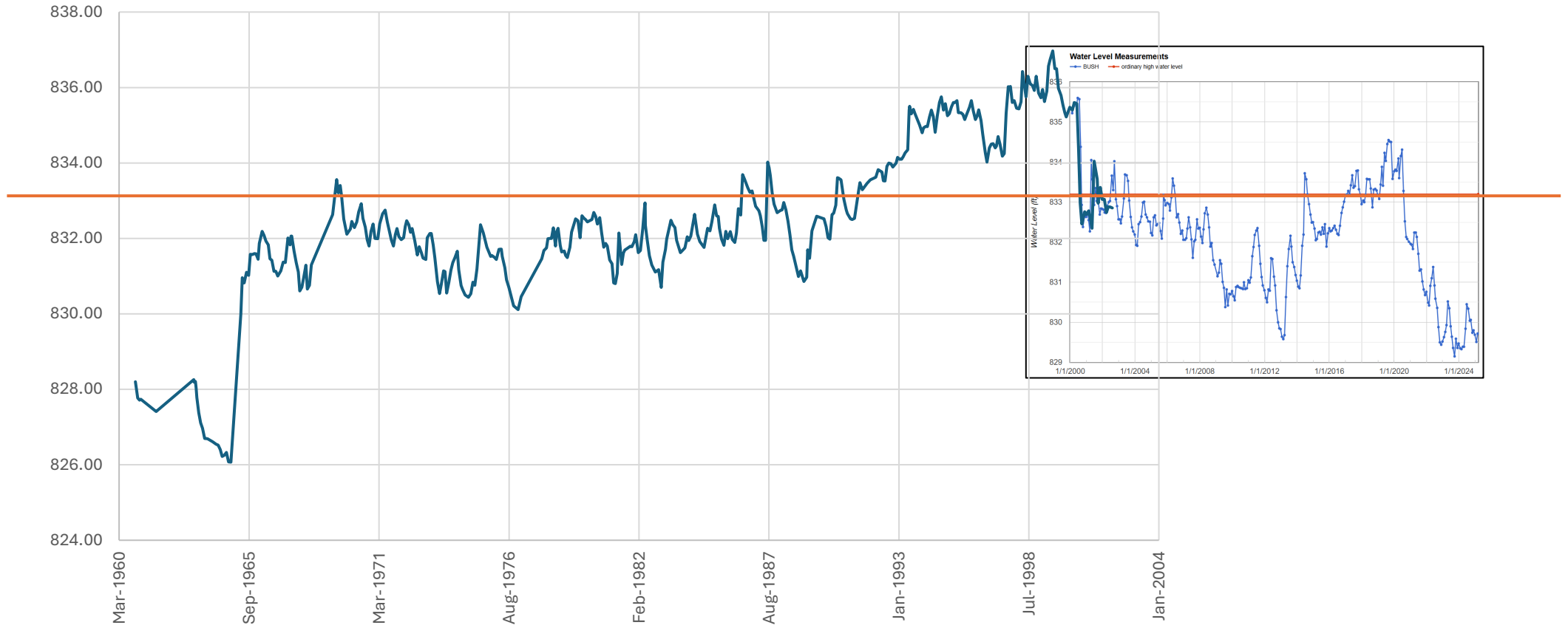


Lake Levels

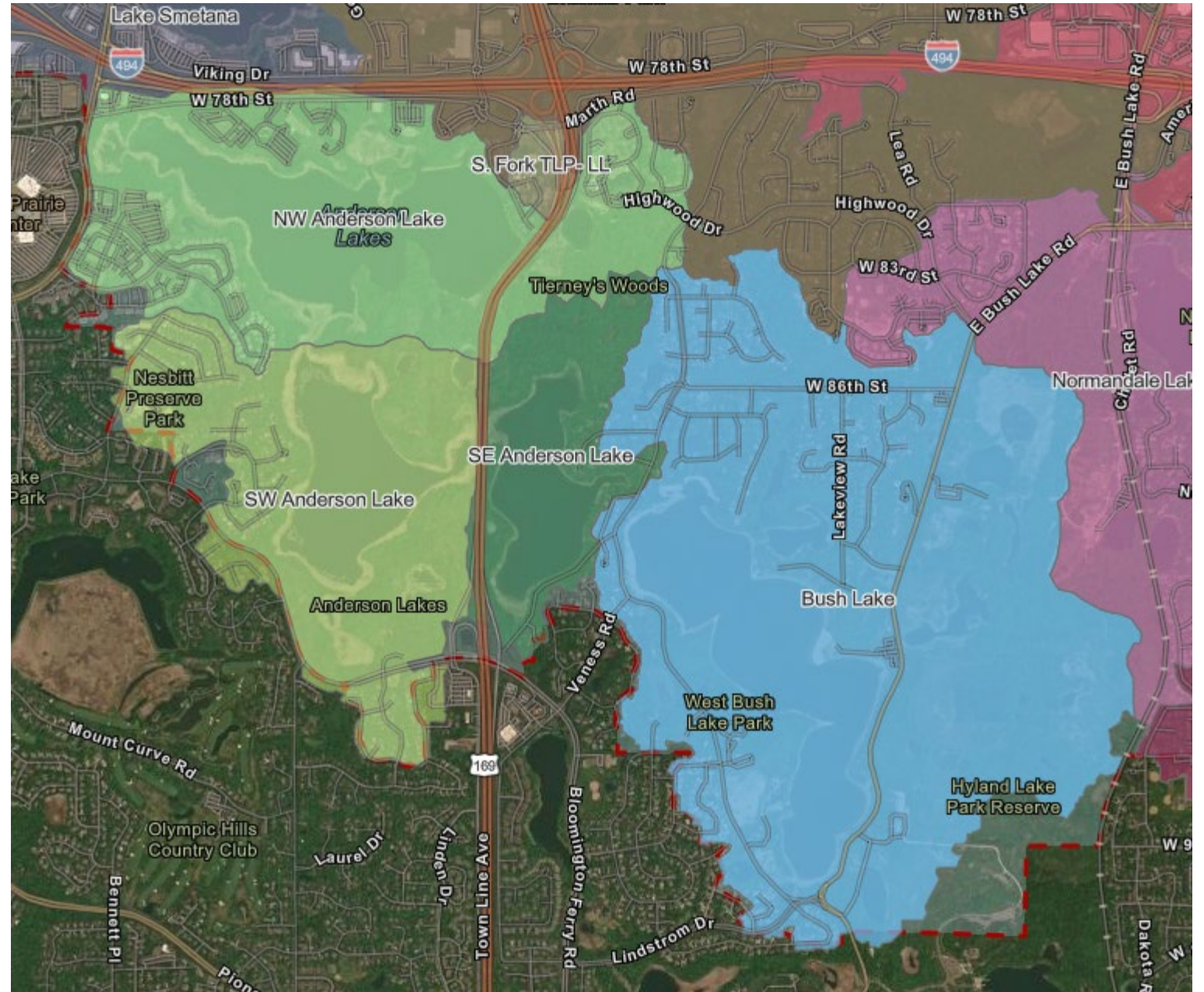


Lake Levels

Bush Lake Water Elevation



Lake Levels



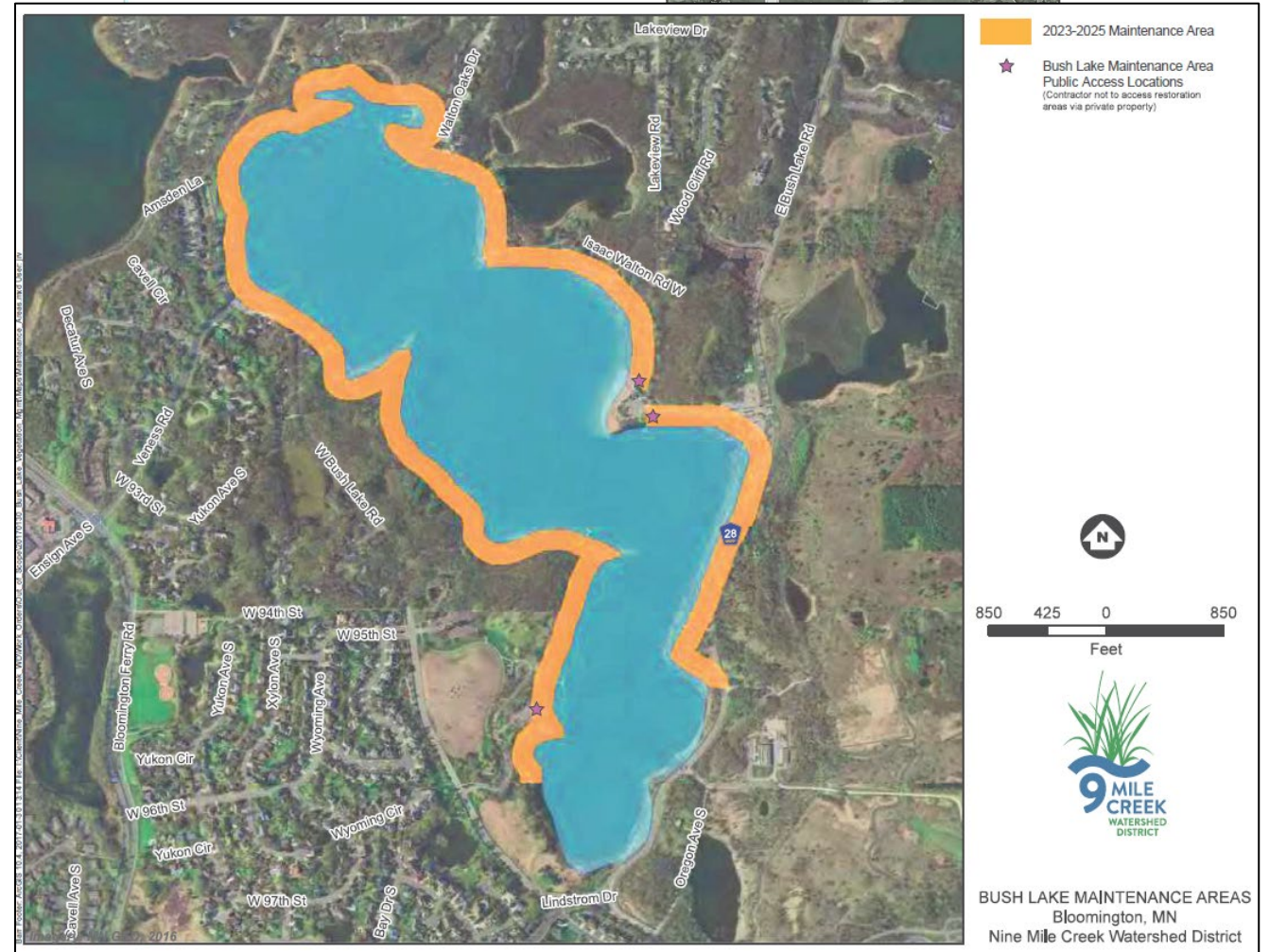
Past/Current Projects

- 2000 Bush Lake Outlet
- Shoreline Buffer



NINE MILE CREEK WATERSHED DISTRICT

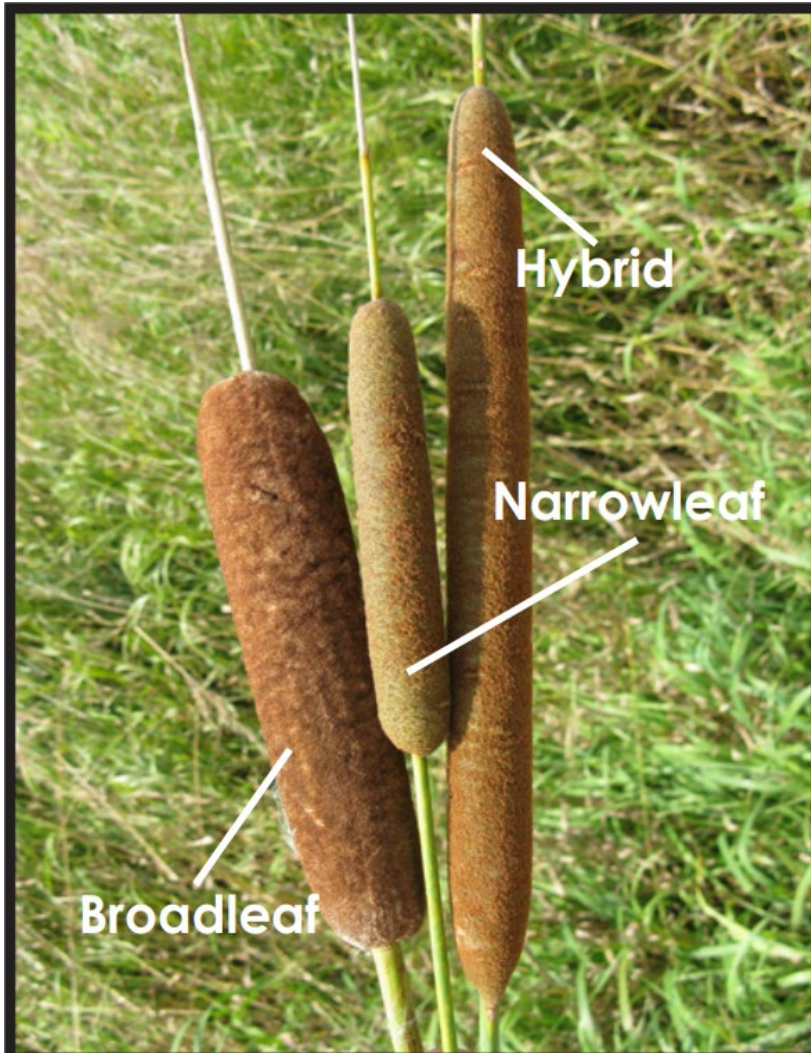
**Bush Lake
Outlet Project
is successful**



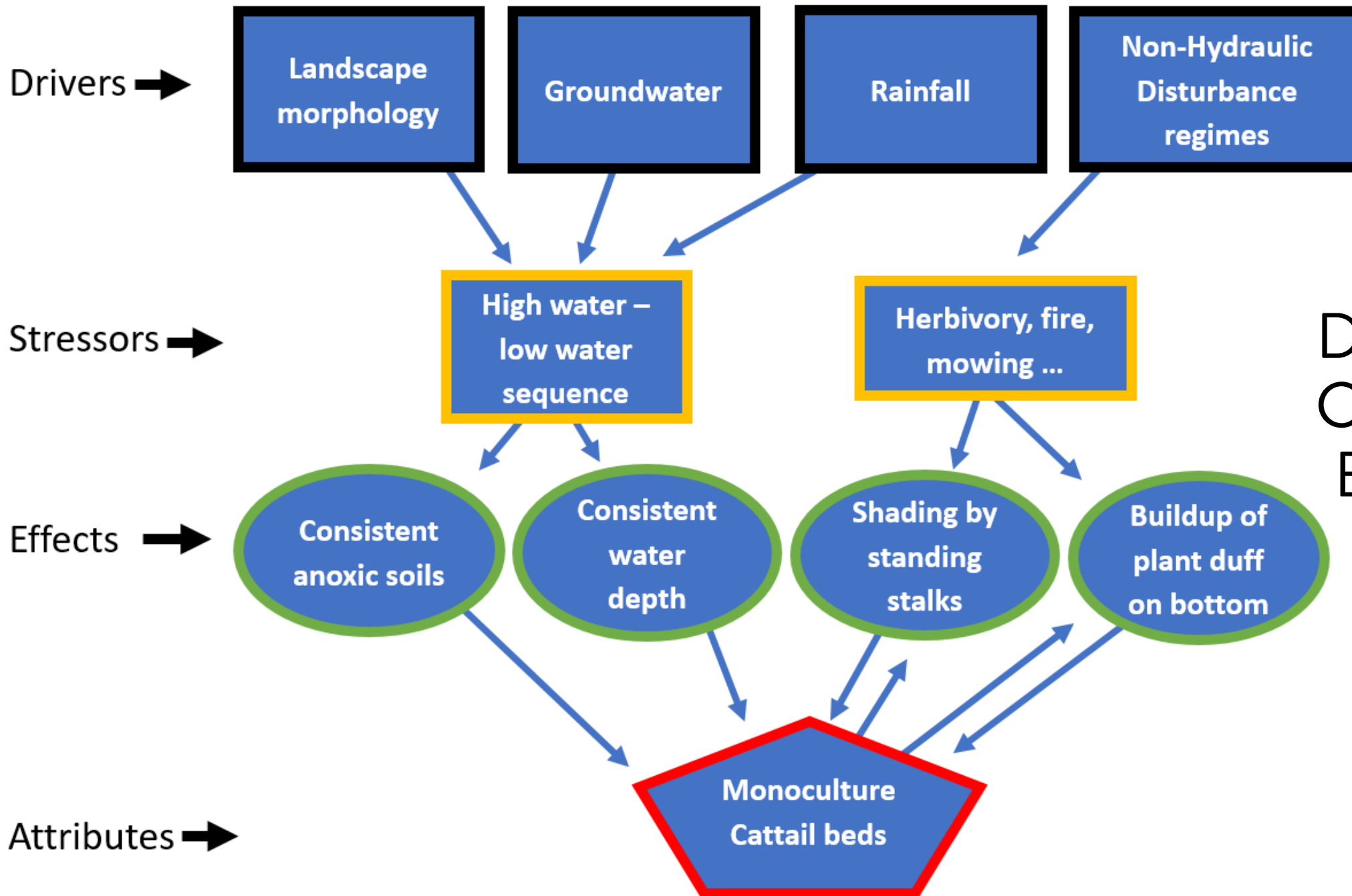
Shelly Pederson at the restored shoreline of Bush Lake

water quality projects.

City Cattail Management—A Brief History



- There is only one native species of cattail in Minnesota – broad-leaf cattail
- Historically, due to grazing, fire and dynamic water levels, cattail was relatively uncommon in MN, compared to its distribution today
- Narrow-leaf cattail was introduced from Europe, it is able to cross breed with broad-leaf cattail creating a hybrid species
- Hybrid cattail is particularly aggressive



Cattail Dominance Conceptual Ecological Model



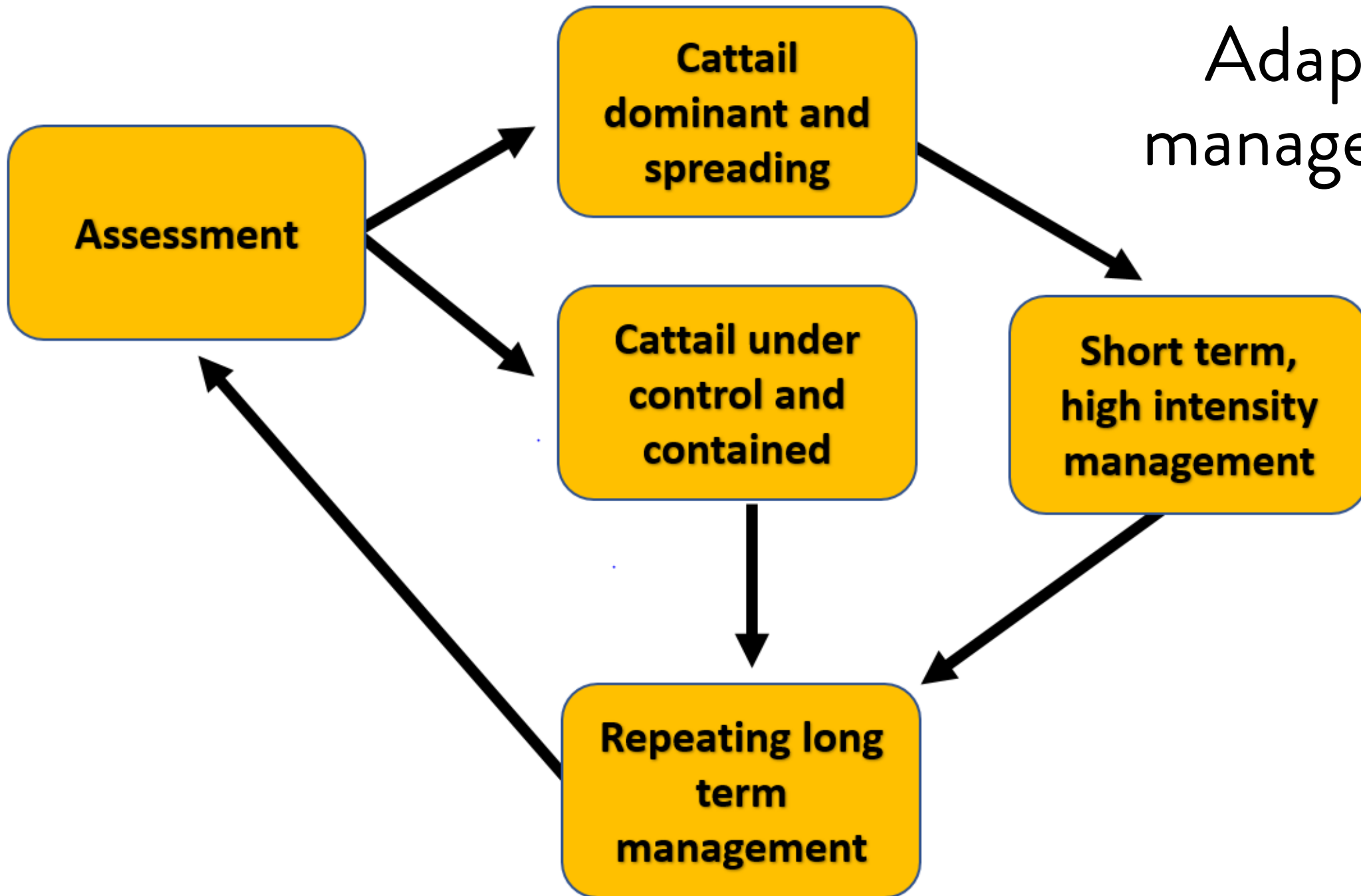
We are here

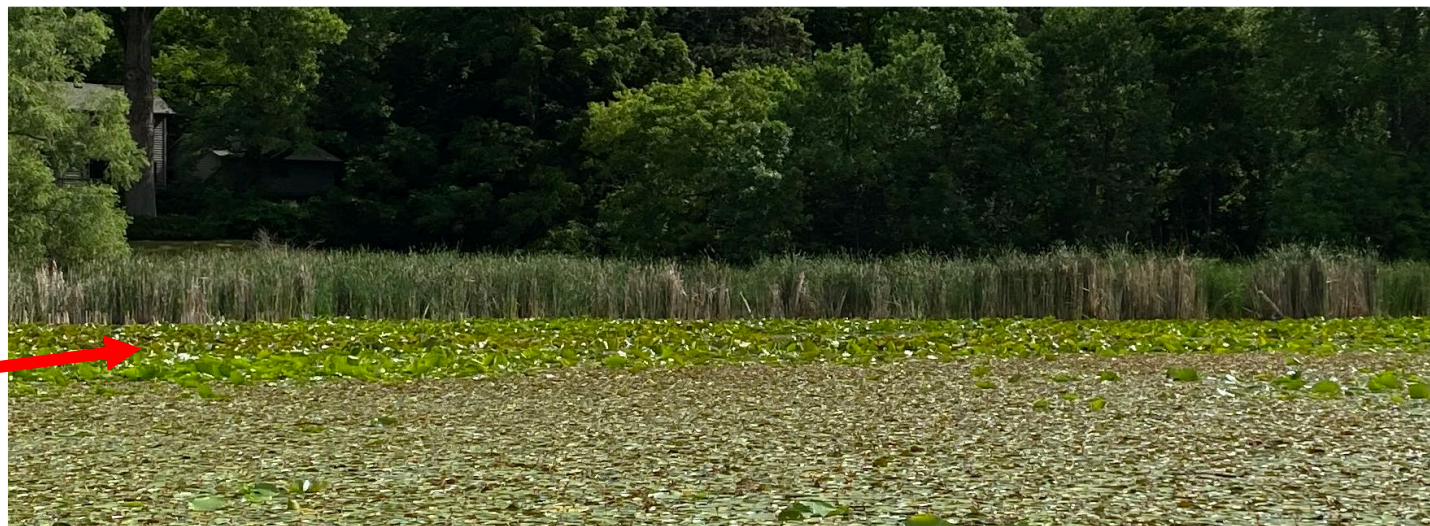
Management Plan

Good ecological management works within the confines of the system

- It took over a decade for the cattail to dominate
- High intensity impacts will set the cattail back
- Long term management will build back ecosystem resilience that resists cattail dominance

Adaptive management





Cattail Distribution

Containment and Reduction





Species Diversity



Emergent
wetlands post
cattail.

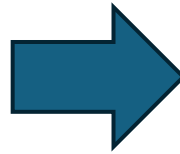


Forebay management



Water Quality Study

- Electrofishing survey
- Aquatic plant survey
- Public engagement/feedback

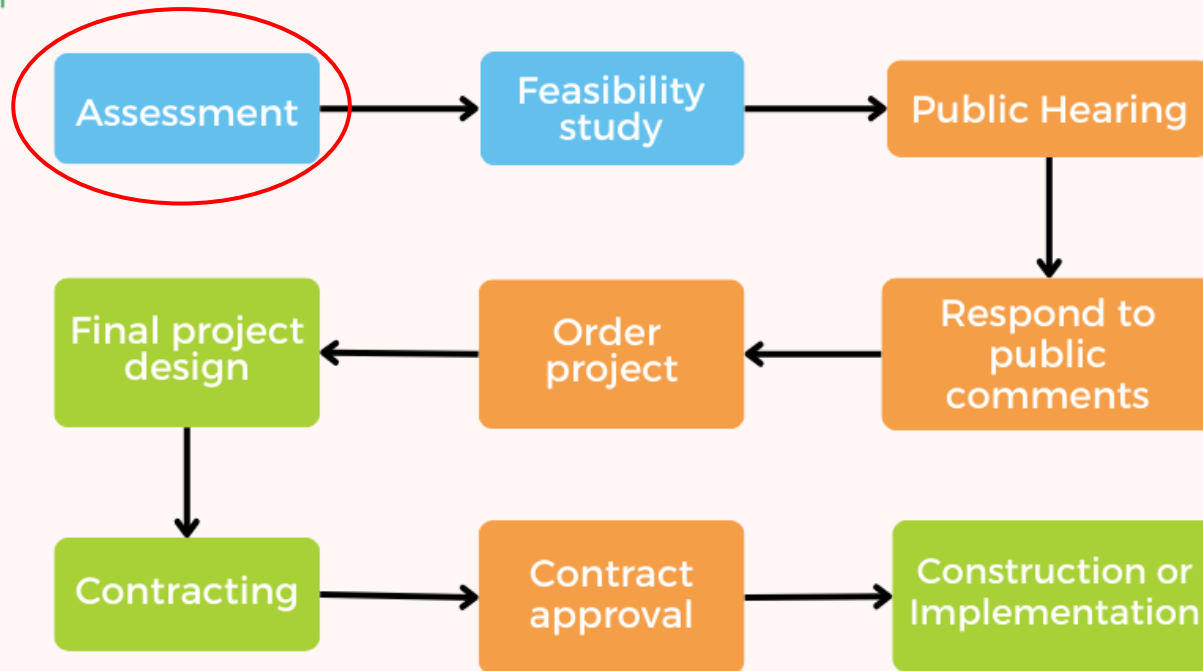
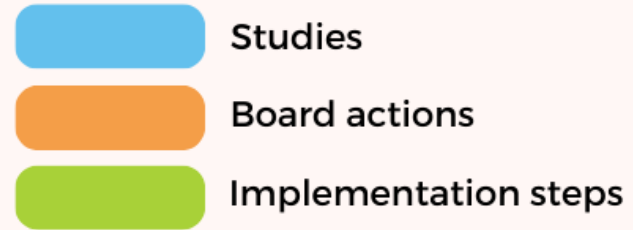


Water quality improvement **protection** project





PROJECT IMPLEMENTATION FRAMEWORK



Questions?

Community Input

What are your current concerns regarding the health of Bush Lake?

What are some actions that could address your concerns?

Community Input

What are your concerns regarding the health of Bush Lake as you think about the future? What are potential future threats?

What are some actions that could address your concerns?