

# Parks & Trails Map



## What we do

We work in collaboration with our partners and community stakeholders, always using sound science to guide decision making. We do many types of work including:

Implementing large-scale projects to protect and improve water quality in the creek and lakes

Monitoring to understand the health of our waterbodies

Presenting educational programs, workshops, and trainings

Awarding grants for projects that protect our waterbodies

Managing stormwater at construction sites through permitting

For more information, visit [ninemilecreek.org](http://ninemilecreek.org)

## Who we are

The Nine Mile Creek Watershed District is a local government organization that works to protect, manage and enhance the water resources in our boundaries for the benefit of all.

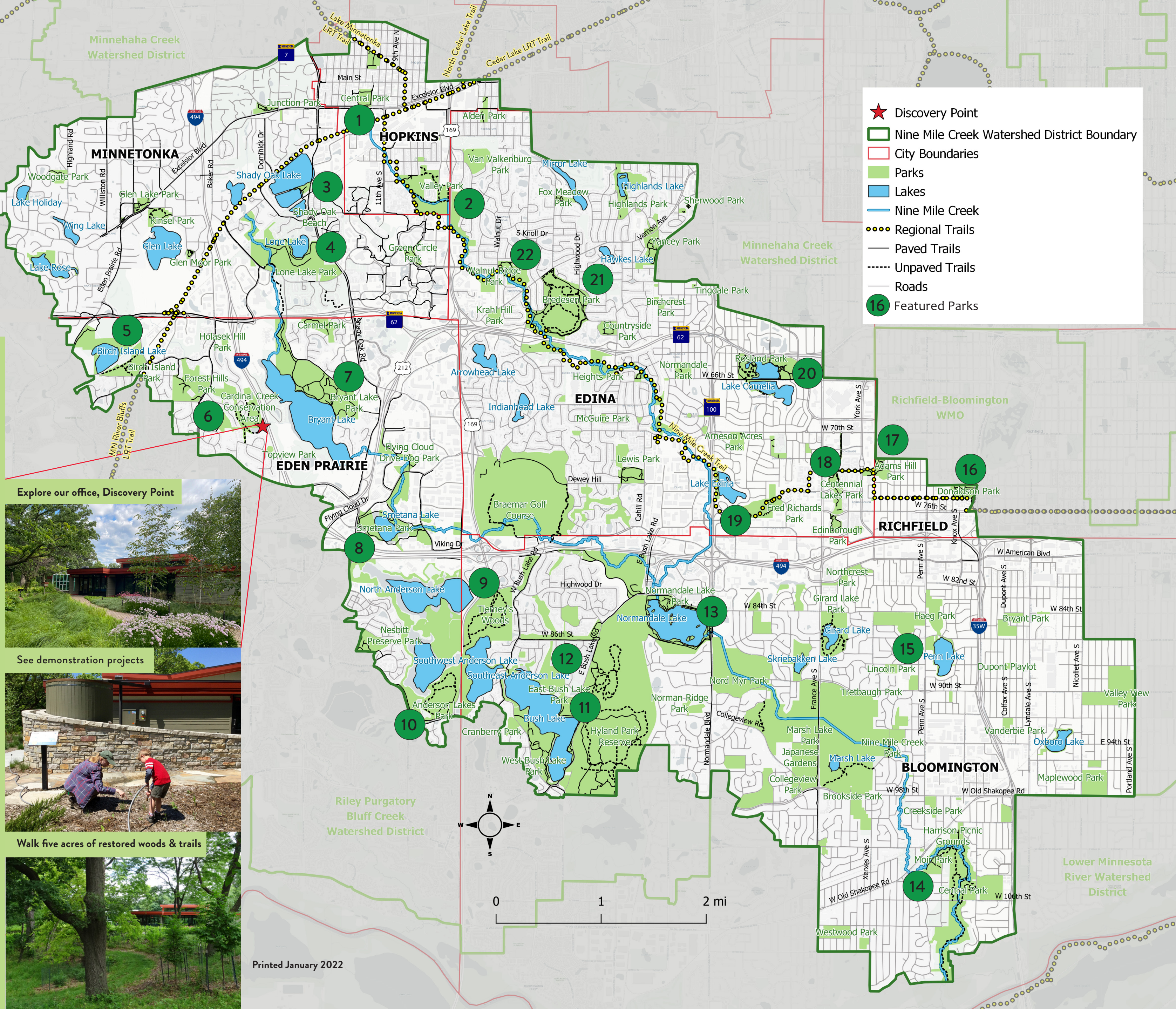
We cover the land area draining to Nine Mile Creek – about 50 square miles including parts of Bloomington, Eden Prairie, Edina, Hopkins, Minnetonka, and Richfield.

Follow us on social media:



Nine Mile Creek Watershed District  
12800 Gerard Dr  
Eden Prairie, MN 55346  
(952) 835-2078  
[ninemilecreek.org](http://ninemilecreek.org)

(Map Cover Photo by R. Gottsleben)



## Featured Parks

Key	Name
1	Central Park
2	Valley Park
3	Shady Oak Beach
4	Lone Lake Park
5	Birch Island Park
6	Cardinal Creek Conservation Area
7	Bryant Lake Park
8	Lake Smetana Park
9	Tierney's Woods Park
10	Anderson Lakes Park Preserve
11	Bush Lake Beach
12	Richardson Nature Center
13	Normandale Lake Park
14	Moir Park
15	Penn Lake Park
16	Donaldson Park
17	Adams Hill Park
18	Centennial Lakes Park
19	Fred Richards Park
20	Rosland Park
21	Bredesen Park
22	Walnut Ridge Park



ARE YOU IN THE WATERSHED?



SCAN ME

Printed January 2022





# Protecting lakes and creeks

## Protecting lakes and creeks

Many of the water quality projects around the District blend seamlessly into the landscape; read about some of our projects that protect water in your area.

## Edina streambank stabilization

This project worked on approximately 3.5 miles of the 5.7 miles of Nine Mile Creek in the City of Edina. The project resulted in improved stream health, stabilized stream banks, improved habitat, and the protection of property from erosion. The District used streambank restoration techniques including realigning the creek channel, native plantings, and rock vanes, along with other methods.



Rock vane in creek channel

## Normandale Lake water quality improvement

The District and the City of Bloomington are working to improve the health of Normandale Lake with a multi-stepped process. The projects that have been implemented include a lake drawdown, aluminum (alum) treatment, and herbicide treatments. The District will also assess the need to improve oxygen conditions in the lake, after evaluating monitoring data and following the completion of herbicide treatments on the lake. Read more on the signs around the lake.

The District is also managing carp in the lake. Through ongoing population studies and radio tagging, staff and scientists will determine the best management methods for carp in the lake.



Carp removal on Normandale Lake

## Nonprofit raingardens

The District identified priority locations for best management practices (BMPs) in the watershed on nonprofit sites. These sites typically have significant amounts of hard surfaces. Hard surfaces, also called impervious surfaces, allow large amounts of polluted runoff to flow to local lakes and creeks. Working with five nonprofit partners, listed below, the District installed six raingardens to catch and soak in polluted runoff.

Chapel Hills UCC: Edina  
Good Samaritan UMC: Edina  
The Church of St. Edward: Bloomington  
St. Luke's Lutheran Church: Bloomington  
Oak Grove Presbyterian Church: Bloomington



Raingarden at Oak Grove

# Featured parks

- Walking trails
- Biking trails
- Picnic area
- Playground
- Swimming beach
- Public boat launch, motors allowed
- Public boat launch, non motorized only
- Fishing pier

Printed January 2022

Key	Name	Address	Amenities	Description	Past NMCWD projects in/near this park
1	Central Park	101 16th Ave S, Hopkins		This 17.9 acre park includes softball fields, hockey rinks, football/soccer fields, pickleball courts, and tennis courts. Bathrooms open seasonally.	
2	Valley Park	700 8th St S, Hopkins		This 14.5 acre park includes an archery range, sand volleyball court, hockey rink and sledding hill. Also includes baseball and softball fields, basketball court, and a community garden. Bathrooms open seasonally. Connects to Three Rivers Park District Regional Trails.	Streambank restoration and planting in 2012.
3	Shady Oak Beach	5200 Shady Oak Rd, Minnetonka		Entrance fees charged for swim beach. Beach and high dive monitored by lifeguards seasonally. Other amenities include concessions, sand volleyball court and boat rentals. Bathrooms open seasonally. Connects to Three Rivers Park District Regional Trails.	
4	Lone Lake Park	5624 Shady Oak Rd, Minnetonka		*Mountain bike trails (5 miles). Also includes 1.6 miles of hiking trails. Also, football/soccer fields, basketball court, pickleball and tennis courts. Bathrooms open seasonally. Access to Bryant Lake Park, Shady Oak Beach & Three Rivers Park District Trails.	Raingardens in the lower parking lot capture and filter water before entering Lone Lake.
5	Birch Island Park	6225 Eden Prairie Rd, Eden Prairie		Unpaved hiking trails through woods. Near Birch Island Woods Conservation Area (6410 Indian Chief Road) and Three Rivers Park District Regional Trails.	Conveyance pipe installed under Highway 62 in 2008 to better manage lake levels.
6	Cardinal Creek Conservation Area	12800 Gerard Dr, Eden Prairie		Park at Discovery Point to access the trail, which borders Discovery Point to the west. Boardwalks and turf trails wind around the Cardinal Creek wetland.	Wetland restoration, trail construction and a weir, or low head dam installed in 2008.
7	Bryant Lake Park	6800 Rowland Rd, Eden Prairie		Bryant Lake offers an 18-hole disc golf course, boat rentals, off-leash dog area, and geocaching. Life guards monitor swim beach seasonally. Bathrooms and concessions open seasonally. Operated by the Three Rivers Park District.	Alum treatments in 2008 and 2013 reduced phosphorous levels and algae growth.
8	Lake Smetana Park	7620 Smetana Ln, Eden Prairie		1.6 miles of paved trail around the lake. Picnic shelters and lake overlooks.	Enlarged to store more flood water in 1999 by making a weir, or low head dam.
9	Tierney's Woods Park	8163 Highwood Dr, Bloomington		1.8 miles of unpaved trail travel through forests and wetlands. Operated by the Three Rivers Park District.	NW & SW Anderson lakes drained, herbicide in SE Anderson in 2008, reducing invasive plants.
10	Anderson Lakes Park Preserve	9800 Anderson Lakes Pkwy, Eden Prairie		Paved and unpaved hiking trails. Operated by the Three Rivers Park District.	
11	Bush Lake Beach	9140 E Bush Lake Rd, Bloomington		No lifeguards at swimming beach. Free parking. Bathroom open seasonally. Connects to Hyland Lake Park Reserve. *Note: motors may not exceed 6 horsepower.	Outlet installed in 2000 to control high water levels; ongoing shoreline restoration projects.
12	Richardson Nature Center	8737 E Bush Lake Rd, Bloomington		Indoor and outdoor play areas, live animals, and educational programs. Equipment rental including exploration kits, snowshoes, and walking poles. Bathrooms open year round. Part of the Hyland Lake Park Reserve and operated by the Three Rivers Park District.	
13	Normandale Lake Park	8470 Chalet Rd, Bloomington		1.9 miles of paved walking and bike trails around Normandale Lake. Community events held at the bandshell (smaller parking lot at 5901 W 84th St). Bathrooms open seasonally. *Note: motors may not exceed 6 horsepower.	Lake drained in 2018, alum treatment in 2019, ongoing herbicide treatments & carp studies.
14	Moir/Central Park	10320 Morgan Ave S, Bloomington		Paved and unpaved trails follow Nine Mile Creek to the Minnesota River. This park also offers disc golf, grills, and softball field. 2 reservable picnic shelters. Bathrooms open seasonally. Trails connect to Harrison Picnic Grounds. Bikes are not allowed on trails.	Streambank stabilization projects in 1991, 2009, 2015, and 2020.
15	Penn Lake Park	1925 W 86th St, Bloomington		Picnic area that overlooks shoreline buffer. *Note: motors may not exceed 6 horsepower.	
16	Donaldson Park	7434 Humboldt Ave S, Richfield		0.4 miles of walking trails. Other amenities include 2 hockey rinks, 2 basketball courts, football/soccer field, 2 baseball fields, 4 tennis courts, and 4 pickleball courts. Many of these fields are lit in the evenings.	
17	Adams Hill Park	7200 Washburn Ave S, Richfield		0.6 miles of walking trails. Also includes basketball and volleyball courts.	
18	Centennial Lakes Park	7499 France Ave S, Edina		This park provides many kinds of equipment for rent, including paddleboats and ice skates depending on the season. The park also offers mini golf and lawn games. 1.5 miles of paved trails circle the lake. Bathrooms and warming house available.	
19	Fred Richards Park	4400 Parklawn Ave, Edina		The Nine Mile Creek Regional Trail winds through Fred Richards Park, a massive park on the grounds of the former Fred Richards Golf Course. More amenities will be added, including a pavilion, ball courts, and more. Only street parking is currently available.	
20	Rosland Park	4300 W 66th St, Edina		Trails circle Lake Cornelia. Other amenities include: inclusive playground, tennis courts and pickleball courts, baseball fields, sand volleyball court, disc golf, grills, and large gazebo. Bathrooms open seasonally. Near the Edina Aquatic Center and Edina Art Center.	Alum treatment in 2020; Rosland Park filtration project installed 2021; ongoing goldfish control.
21	Bredesen Park	5901 Olinger Blvd, Edina		2 miles of walking and biking trails offer views of Nine Mile Creek and scenic woods. Bathroom available year round. Connects to Three Rivers Park District Regional Trails.	Created in 1985 for extra flood storage area; originally a marsh.
22	Walnut Ridge Park	5801 Londonderry Rd, Edina		Other amenities include open fields, tennis court (striped for pickleball), and hockey rink. Bathroom open seasonally. A half mile multi-use trail with views of Nine Mile Creek connects to Three Rivers Park District Regional Trails.	Creek had natural bends remade to slow water and protect banks (west of the park).

# You can help!

## Adopt a drain

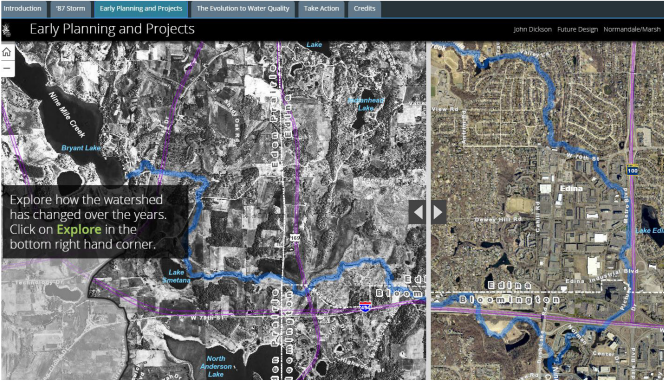
Keep the grates in your neighborhood clear of leaves and trash. Find out which drains are available to adopt in your area at: [adopt-a-drain.org](http://adopt-a-drain.org)

## Pick up trash

Trash and dog waste can hurt our lakes and creeks. Bring bags with you to pick up litter, and always remember to clean up after your pet on walks-make sure it gets into a garbage can after!

## Don't dump aquarium pets

Releasing aquarium pets and plants into lakes harms native fish and their habitats. If you don't want them anymore, consider surrendering them at a re-homing event: [aquarium.mn/programs/auctions](http://aquarium.mn/programs/auctions)



## Story maps

Story maps combine maps with text, photos, and videos on the web. Our website features a story map about the District and its history, and another that focuses on District projects going back to the formation of the District in 1959. To view our story maps, visit: [ninemilecreek.org/story-map](http://ninemilecreek.org/story-map)

## Grants

Grant funds are available to residents, associations, nonprofits, schools, businesses, and cities for projects located within the District's boundaries. Stewardship grant projects help prevent stormwater pollution to our lakes and Nine Mile Creek. Types of stewardship projects include raingardens, shoreline buffers, and permeable pavers. Habitat restoration grant projects help restore native plant and wildlife habitat. Types of habitat restoration projects include prairie and woodland restorations. Find out more at [ninemilecreek.org/grants](http://ninemilecreek.org/grants)

