

Appendix A: Species Planted

Live Plants

VINES

Clematis virginiana (Virgin's Bower)

TREES

Acer nigrum (Black Maple)
Aescleus glabra (Ohio Buckeye)
(Amelanchier x grandiflora) (Serviceberry 'Autumn Brilliance')
Amelanchier laevis (Smooth Serviceberry)
Carpinus caroliniana (Blue Beech)
Celtis occidentalis (Hackberry)
Cercis canadensis (Eastern Redbud)
Cladrastis kentukea (Yellowwood)
Crataegus macracantha (Fleshy Hawthorn)
Crataegus mollis (Downy Hawthorn)
Gymnocladus dioica (Kentucky Coffeetree)
Juniperus virginiana (Red Cedar)
Ostrya virginiana (Ironwood)
Pinus banksiana (Jack Pine)
Pinus Strobus (White Pine)
Platanus occidentalis 'Bloodgood' (Sycamore)
Prunus virginiana (Common Chokecherry)
Quercus alba (White Oak)
Quercus ellipsoidalis (Northern Pin Oak)
Quercus macrocarpa (Bur Oak)
Quercus rubra (Red Oak)
Tilia americana (American Basswood)
Tsuga canadensis (Eastern Hemlock)
Ulmus americana 'Valley Forge' (Valley Forge Elm)

SHRUBS

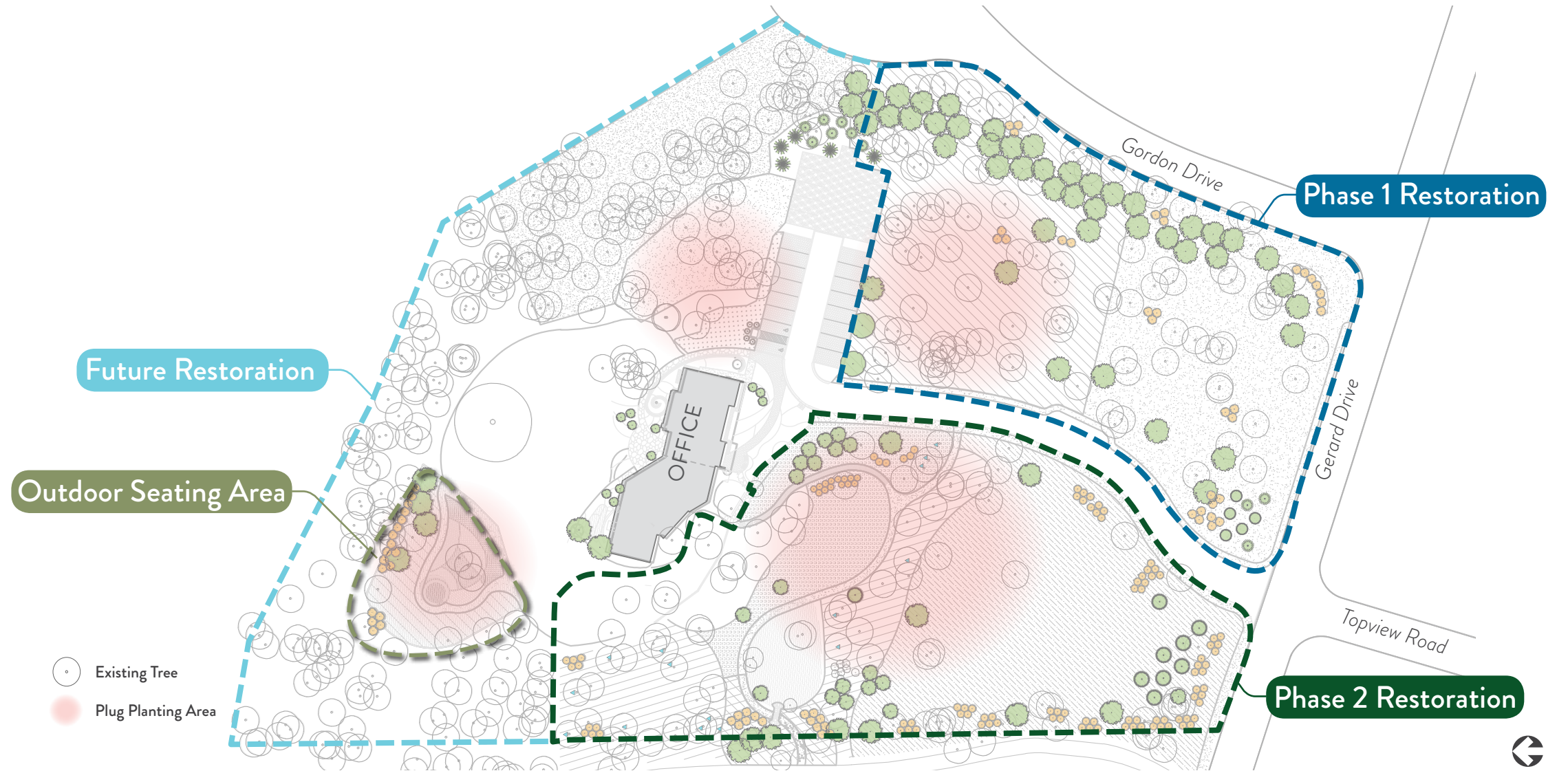
Amelanchier alnifolia 'Regent' (Serviceberry 'Regent')
Amelanchier borealis (Downy Serviceberry)
Aronia melanocarpa (Black Chokeberry)
Ceanothus americanus (New Jersey Tea)
Cephalanthus occidentalis (Buttonbush)
Cornus alternifolia (Pagoda Dogwood)
Cornus racemosa (Gray Dogwood)
Corylus americana (American Hazelnut)
Dirca palustris (Leatherwood)
Euonymus atropurpureus (Eastern Wahoo)
Hamamelis virginiana (Witch Hazel)
Ilex verticillata (Winterberry)
Juniperus communis var. *depressa* (Common Juniper)
Physocarpus opulifolius (Common Ninebark)
Rhus hirta (Staghorn Sumac)
Rosa blanda (Early Wild Rose)
Rosa carolina (Pasture Rose)
Symphoricarpos albus (Snowberry)
Viburnum rafinesquianum (Arrowwood Viburnum)

PERENNIAL PLUGS

Echinacea angustifolia (Narrow-leaved Coneflower)
Adiantum pedatum (Maidenhair Fern)
Allium cernuum (Nodding Onion)
Allium stellatum (Prairie onion)
Amorpha canescens (Leadplant)
Anaphalis margaritacea (Pearly Everlasting)
Anemone americana (Round-lobe Hepatica)
Anemone patens (Pasque Flower)
Anemonella thalictroides (Rue Anemone)
Aquilegia canadensis (Columbine)
Arisaema triphyllum (Jack-in-the-pulpit)
Asarum canadense (Wild Ginger)
Asclepias purpurascens (Purple Milkweed)
Asclepias speciosa (Showy Milkweed)
Asclepias tuberosa (Butterfly Milkweed)
Asclepias verticillata (Whorled Milkweed)
Asclepias viridiflora (Green Milkweed)
Aster divaricatus (White Wood Aster)
Astragalus canadensis (Canada Milk Vetch)
Athyrium filix-femina (Lady Fern)
Baptisia alba (Wild White Indigo)
Bromus kalmii (Prairie Brome)
Campanula americana (Tall Bellflower)
Carex brevior (Plains Oval Sedge)
Carex eburnea (Ivory Sedge)
Carex gracillima (Graceful Sedge)
Carex pennsylvanica (Pennsylvania Sedge)
Carex radiata (Eastern Star Sedge)
Carex rosea (Curly-Styled Wood Sedge)
Carex sprengei (Long Beaked Sedge)
Carex vulpinoidea (Brown Fox Sedge)
Caulophyllum thalictroides (Blue Cohosh)
Coreopsis palmata (Prairie Coreopsis)
Dalea purpurea (Purple Prairie Clover)
Dicentra cucullaria (Dutchman's Breeches)
Echinacea angustifolia (Narrow Leaved Coneflower)
Echinacea palida (Pale Purple Coneflower)
Eryngium yuccifolium (Rattlesnake Master)
Eurybia macrophylla (Big Leaved Aster)

Fragaria virginiana (Wild Strawberry)
Geranium maculatum (Wild Geranium)
Geum rivale (Water Avens)
Heuchera richardsonii (Prairie Alum Root)
Hydrophyllum virginianum (Virginia Waterleaf)
Juncus tenuis (Path Rush)
Lespedeza capitata (Round Headed Bush Clover)
Liatris aspera (Button Blazing Star)
Liatris ligulistylis (Meadow blazing star)
Liatris punctata (Dotted Blazing Star)
Lupinus perennis (Wild Lupine)
Mitella diphylla (Bishop's Cap)
Monarda punctata (Spotted Bee Balm)
Oligoneuron album (White Upland Aster)
Oligoneuron rigidum (Stiff Goldenrod)
Onoclea sensibilis (Sensitive Fern)
Penstemon digitalis (Foxglove Beardtongue)
Penstemon grandiflorus (Large-Flowered Penstemon)
Phlox divaricata (Wild Blue Phlox)
Polygonatum biflorum (Solomon's Seal)

Pycnanthemum virginianum (Mountain Mint)
Schizachyrium scoparium (Little Bluestem)
Solidago nemoralis (Gray Goldenrod)
Sporobolus heterolepis (Prairie Dropseed)
Symphotrichum cordifolium (Blue Wood Aster)
Symphotrichum lateriflorum (Calico Aster)
Symphotrichum oblongifolium (Aromatic Aster)
Symphotrichum oolentangiense (Sky Blue Aster)
Thalictrum dasycarpum (Purple Meadow Rue)
Thalictrum dioicum (Early Meadow Rue)
Tradescantia ohioensis (Ohio Spiderwort)
Vernonia fasciculata (Common Ironweed)
Veronicastrum virginicum (Culver's Root)



Seed Mixes

HIGH DIVERSITY WOODLAND SEED MIX

Grasses

- Bouteloua curtipendula* (Sideoats Grama)
- Bromus kalmii* (Kalm's Brome)
- Bromus pubescens* (Hairy Wood Chess)
- Elymus hystrix* (Bottlebrush Grass)
- Elymus villosus* (Silky Wild Rye)
- Panicum virgatum* (Switchgrass)
- Schizachyrium scoparium* (Little Bluestem)
- Diarrhena obovata* (Beak Grass)

Sedges & Rushes

- Carex blanda* (Common Wood Sedge)
- Carex brevior* (Plains Oval Sedge)
- Carex davisi* (Awned Graceful Sedge)
- Carex eburnea* (Ivory Sedge)
- Carex gracilescens* (Slender Wood Sedge)
- Carex molesta* (Field Oval Sedge)
- Carex pennsylvanica* (Pennsylvania Sedge)
- Carex radiata* (Straight-styled Wood Sedge)
- Carex rosea* (Curly-styled Wood Sedge)
- Carex sprengei* (Long-beaked Sedge)
- Carex stipata* (Common Fox Sedge)
- Juncus torreyi* (Torrey's Rush)

Forbs

- Allium canadense* (Wild Garlic)
- Allium tricoccum* (Wild Leek)
- Anemone virginiana* (Tall Thimbleweed)
- Anemonella thalictroides* (Rue Anemone)
- Arisaema triphyllum* (Jack-in-the-Pulpit)
- Asclepias exaltata* (Poke Milkweed)
- Caulophyllum thalictroides* (Blue Cohosh)
- Eurybia macrophylla* (Big-leaved Aster)
- Juncus tenuis* (Path Rush)
- Penstemon digitalis* (Foxglove Beardtongue)
- Sanguinaria canadensis* (Bloodroot)
- Smilacina racemosa* (Solomon's Plume)
- Smilacina stellata* (Starry Solomon's Plume)
- Symphotrichum cordifolium* (Heart-leaved Aster)
- Symphotrichum ericoides* (Heath Aster)
- Tephrosia virginiana* (Goat's Rue)
- Thalictrum dioicum* (Early Meadow Rue)
- Tradescantia ohiensis* (Ohio Spiderwort)
- Uvularia grandiflora* (Bellwort)

PRAIRIE GRASS SEED MIX

Grasses

- Bouteloua gracilis* (Blue Grama)
- Elymus canadensis* (Canada Wild Rye)
- Bouteloua curtipendula* (Sideoats Grama)
- Schizachyrium scoparium* (Little Bluestem)

HIGH DIVERSITY SEED MIX (SAVANNA AREAS)

Grasses

- Andropogon gerardii* (Big Bluestem)
- Bouteloua curtipendula* (Sideoats Grama)
- Bromus kalmii* (Kalm's Brome)
- Elymus hystrix* (Bottlebrush Grass)
- Elymus villosus* (Silky Wild Rye)
- Glyceria striata* (Fowl Manna Grass)
- Panicum virgatum* (Switchgrass)
- Schizachyrium scoparium* (Little Bluestem)
- Sorghastrum nutans* (Indiangrass)

Sedges & Rushes

- Carex blanda* (Common Wood Sedge)
- Carex brevior* (Plains Oval Sedge)
- Carex eburnea* (Ivory Sedge)
- Carex gracilescens* (Slender Wood Sedge)
- Carex molesta* (Field Oval Sedge)
- Carex muskingumensis* (Palm Sedge)
- Carex sprengei* (Long-beaked Sedge)

Forbs

- Actaea rubra* (Red Baneberry)
- Allium canadense* (Wild Garlic)
- Allium cernuum* (Nodding Onion)
- Agastache foeniculum* (Fragrant Hyssop)
- Asclepias exaltata* (Poke Milkweed)
- Aster lateriflorus* (Calico Aster)
- Aster macrophyllus* (Big-leaved Aster)
- Arisaema triphyllum* (Jack-in-the-Pulpit)
- Astragalus canadensis* (Canada Milk Vetch)
- Aquilegia canadensis* (Columbine)
- Campanula americana* (Tall Bellflower)
- Caulophyllum thalictroides* (Blue Cohosh)
- Chamaecrista fasciculata* (Partridge Pea)
- Coreopsis palmata* (Prairie Coreopsis)
- Echinacea palida* (Pale purple coneflower)
- Euphorbia corollata* (Flowering Spurge)
- Geranium maculatum* (Wild Geranium)
- Helianthus occidentalis* (Western Sunflower)

- Lespedeza capitata* (Round-headed Bush Clover)
- Monarda fistulosa* (Wild Bergamot)
- Monarda punctata* (Spotted Bee Balm)
- Oligoneuron rigidum* (Stiff Goldenrod)
- Penstemon grandiflorus* (Large-flowered Beardtongue)
- Sanguinaria canadensis* (Bloodroot)
- Smilacina racemosa* (Solomon's Plume)
- Polygonatum canaliculatum* (Solomon's Seal)
- Pycnanthemum virginianum* (Virginia Mountain Mint)
- Ratibida columnifera* (Long-headed Coneflower)
- Rudbeckia hirta* (Black-eyed Susan)
- Rudbeckia subtomentosa* (Sweet Black-eyed Susan)
- Solidago nemoralis* (Old Field Goldenrod)
- Tephrosia virginiana* (Goat's Rue)
- Thalictrum dioicum* (Early Meadow Rue)
- Verbena stricta* (Hoary Vervain)
- Veronicastrum virginicum* (Culver's Root)
- Zizia aurea* (Golden Alexanders)

WOODLAND SEED MIX

Grasses

- Bouteloua gracilis* (Blue Grama)
- Bromus kalmii* (Kalm's Brome)
- Elymus canadensis* (Canada Wild Rye)
- Elymus hystrix* (Bottlebrush Grass)
- Elymus virginicus* (Virginia Wild Rye)
- Elymus villosus* (Silky Wild Rye)

Sedges & Rushes

- Carex hystericina* (Porcupine Sedge)
- Carex pennsylvanica* (Pennsylvania Sedge)
- Carex molesta* (Field Oval Sedge)
- Carex sprengei* (Long-beaked Sedge)

FESCUE LAWN SEED MIX

Grasses

- Festuca rubra* (Creeping Red Fescue)

